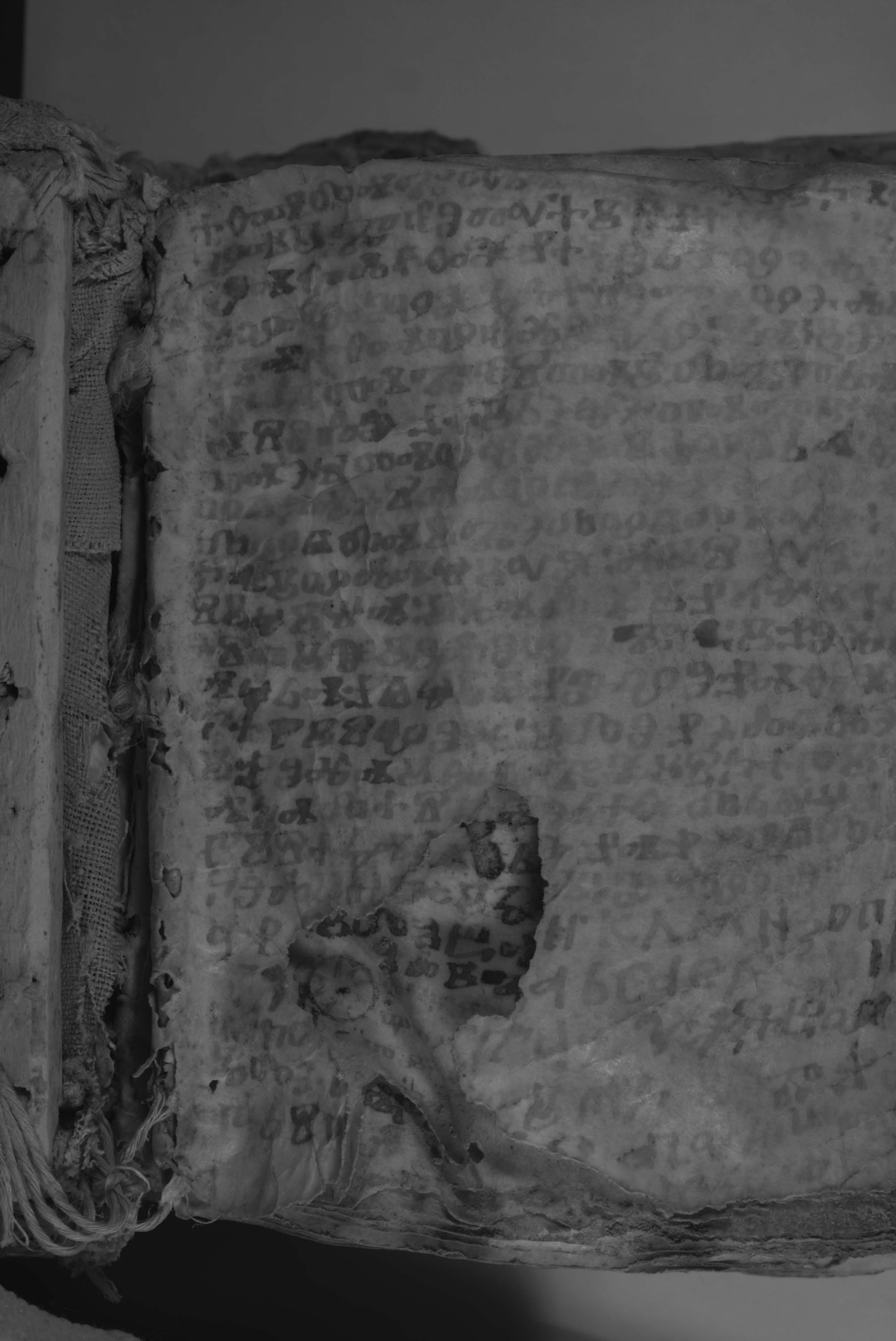
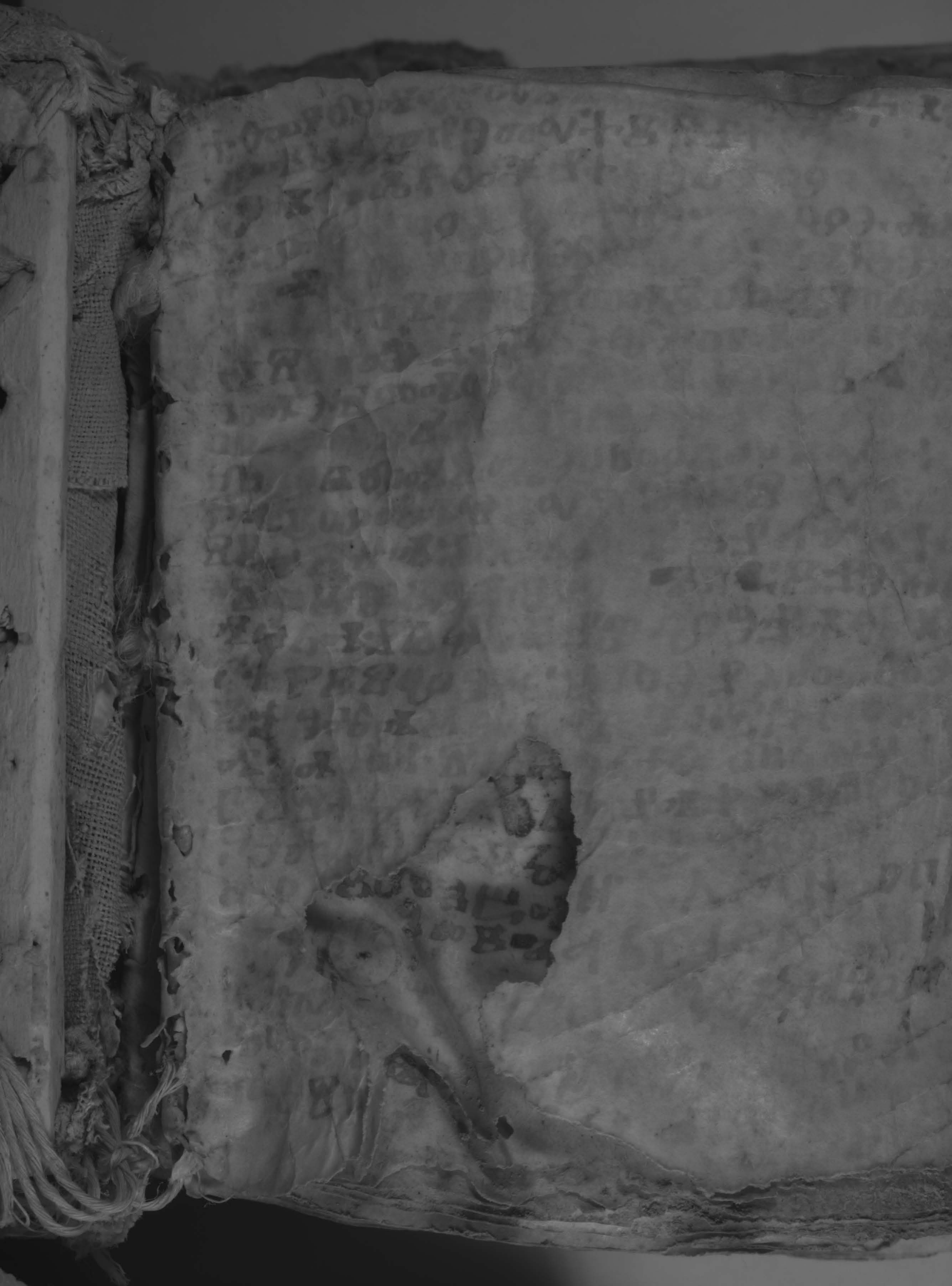


Handwritten text in an ancient script, possibly a form of cuneiform or a similar early writing system. The text is arranged in approximately 25 horizontal lines across the page. The script is highly stylized and difficult to decipher. A large, irregular tear or hole is present in the lower-left quadrant of the page, obscuring several lines of text. The paper is aged and shows signs of wear, including fraying at the edges and some discoloration.



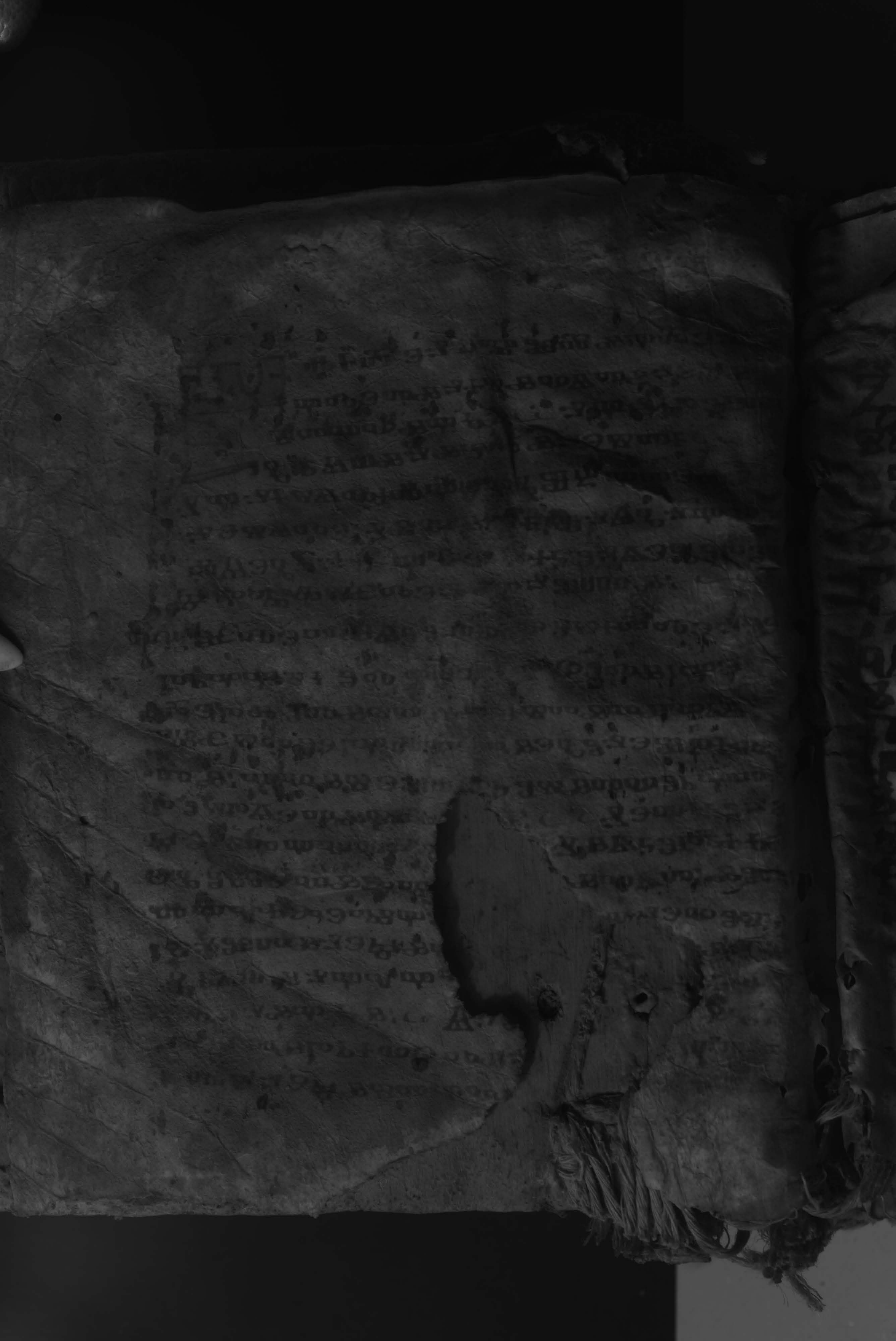


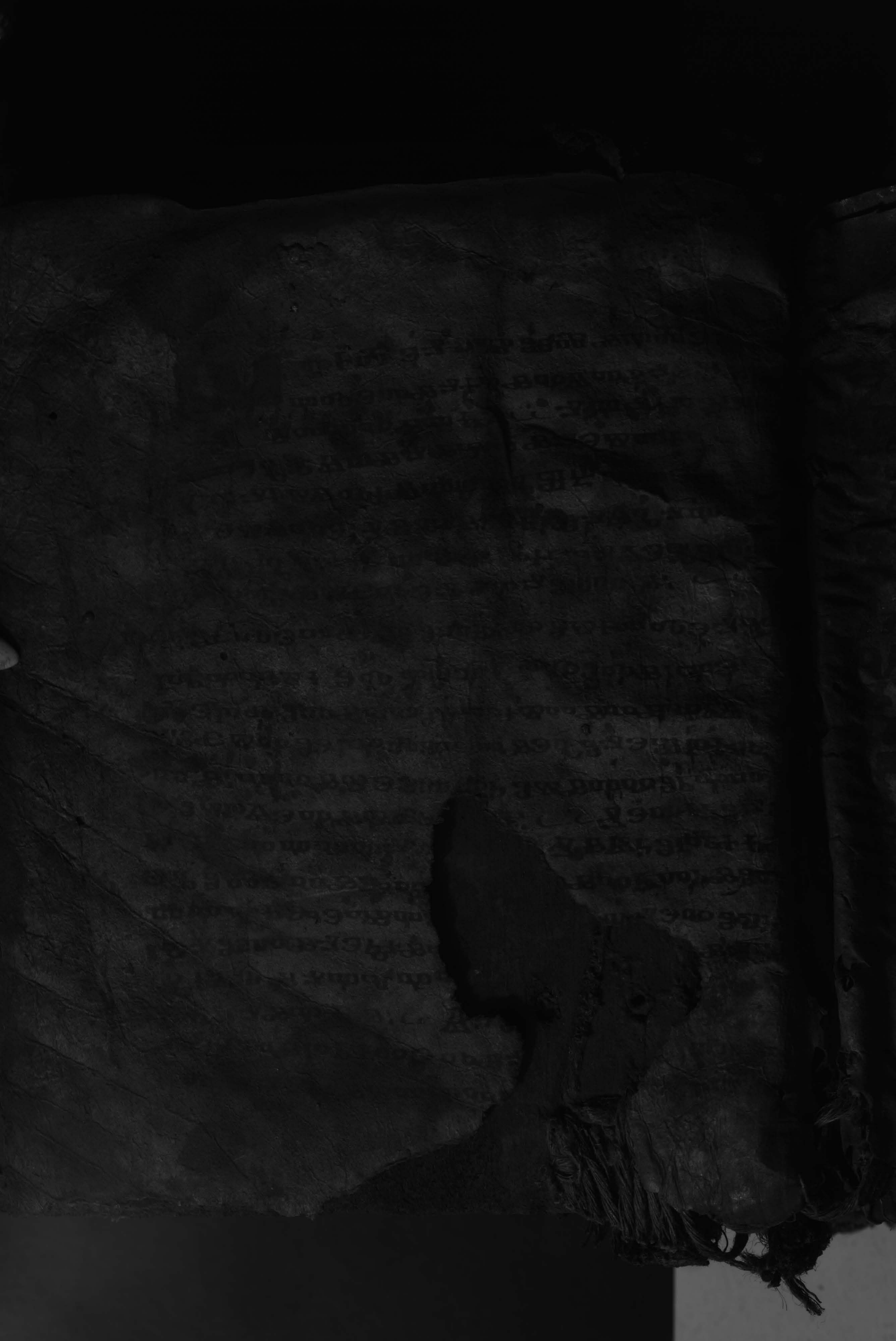
Handwritten text in an ancient script, possibly Coptic or Greek, covering the page. The text is arranged in approximately 20 horizontal lines. A large, irregular tear is present in the lower-left quadrant, obscuring several lines of text. The script is dense and appears to be a form of early Christian or classical writing.



H K A M N 3 D T
q b c d e f

Handwritten text in a different script, possibly a later form of the same language or a different dialect, located in the bottom right corner of the page.





Handwritten text in an ancient script, likely Tamil, arranged in approximately 25 horizontal lines. The text is significantly obscured by a large, irregular tear in the center of the page, which has been partially mended with a piece of fabric or paper. The script is dense and appears to be a form of classical or medieval South Asian writing.

Vertical handwritten text along the right edge of the page, possibly serving as a marginal note or a columnar list. The script is consistent with the main body of text.

Handwritten text in an ancient script, possibly Tamil or Grantha, arranged in approximately 20 horizontal lines. The text is significantly obscured by a large, irregular tear in the lower right quadrant of the page. The script is dark and appears to be ink on aged, textured paper.

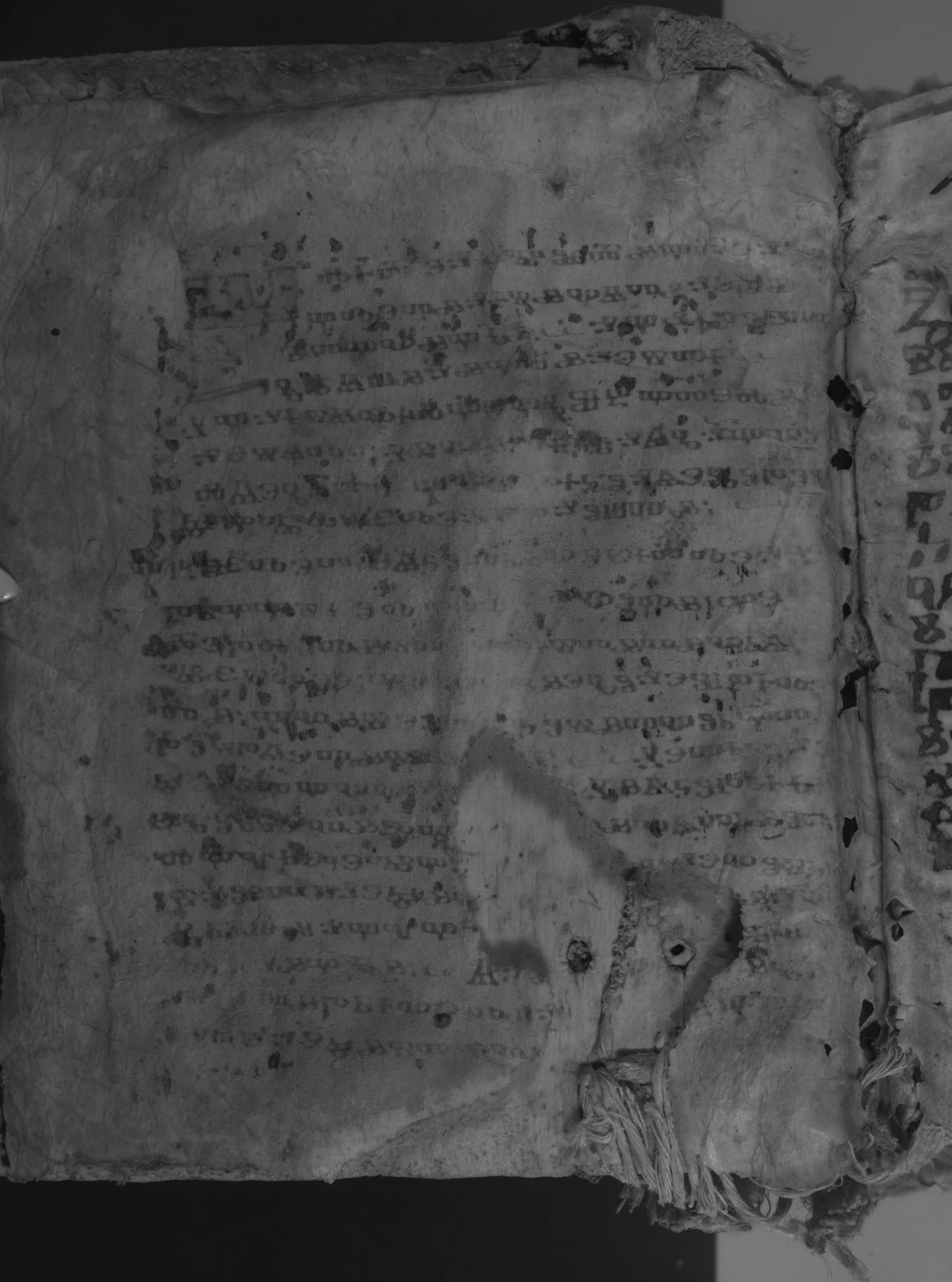
Vertical handwritten text on the right edge of the page, continuing from the main body of text. It is also in the same ancient script and is partially cut off by the right margin of the image.



Handwritten text in an ancient script, likely Pahlavi, arranged in approximately 20 horizontal lines. The text is significantly faded and obscured by a large, irregular tear in the lower right quadrant of the page. The script appears to be a form of Old Persian or Middle Persian.

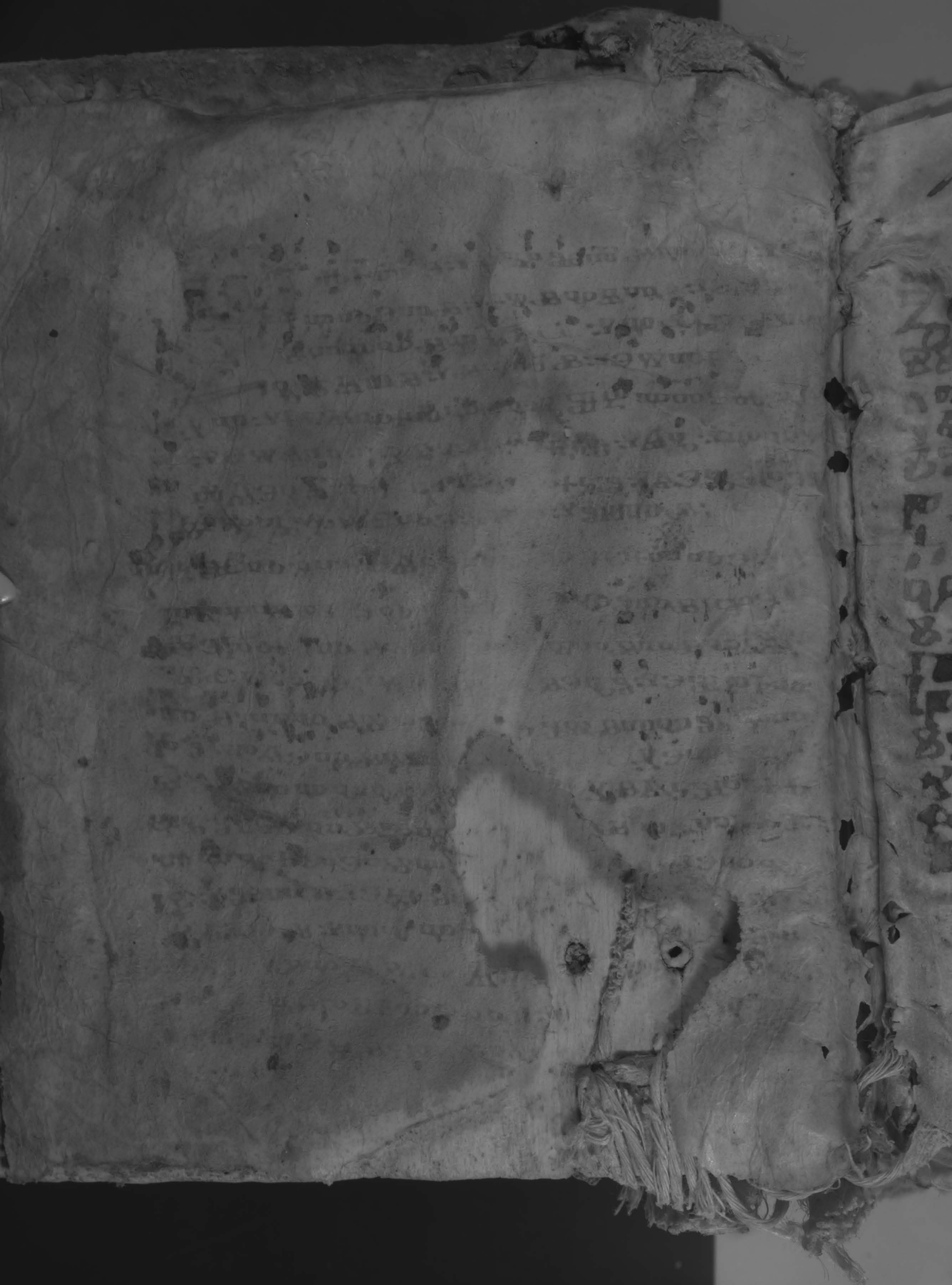
Fragment of handwritten text visible on the adjacent page to the right, showing the right edge of the script.





Faint, mirrored bleed-through text from the reverse side of the page, appearing as dark, illegible markings on the aged and stained paper.

Fragment of text visible on the adjacent page to the right, showing some legible characters and words.



Handwritten text in an ancient script, likely Coptic, arranged in approximately 20 horizontal lines. The text is significantly faded and obscured by a large, irregular tear in the lower right quadrant of the page. The script appears to be a form of early Christian or monastic writing.

Fragment of handwritten text visible on the adjacent page to the right, showing a vertical column of characters in the same script.



abcdefghijklmnopqrstuvwxyz

abcdefghijklmnopqrstuvwxyz
abcdefghijklmnopqrstuvwxyz

abcdefghijklmnopqrstuvwxyz
abcdefghijklmnopqrstuvwxyz

abcdefghijklmnopqrstuvwxyz
abcdefghijklmnopqrstuvwxyz

abcdefghijklmnopqrstuvwxyz
abcdefghijklmnopqrstuvwxyz

abcdefghijklmnopqrstuvwxyz
abcdefghijklmnopqrstuvwxyz

abcdefghijklmnopqrstuvwxyz
abcdefghijklmnopqrstuvwxyz

abcdefghijklmnopqrstuvwxyz
abcdefghijklmnopqrstuvwxyz

abcdefghijklmnopqrstuvwxyz
abcdefghijklmnopqrstuvwxyz



i b c d e f g h i k l m n o p q r s t u v w x y z

Handwritten text in a cursive script, likely a cipher or shorthand, covering the majority of the page. The text is dense and difficult to decipher due to the style and fading.



i b c d e f g h i k l m n o p q r s

t u x y
[The following text is extremely faint and illegible due to the image quality and the age of the manuscript. It appears to be a list of words or a table of characters.]



[Faint text at the bottom of the page, possibly a signature or a reference number.]

i b c d e f g h i k l m n o p q r s t

Handwritten text in a medieval script, likely a cipher or a specific dialect. The text is arranged in approximately 20 horizontal lines. The characters are dense and often resemble modern letters but with significant variations in shape and spacing. Some lines appear to be organized into columns or groups, possibly representing a grid or a specific encoding scheme. The ink is dark and the parchment is aged and slightly stained.



a b c d e f g h i k l m n o p q r s t

u x y

Handwritten text in a cursive script, likely a cipher or shorthand, covering the majority of the page. The text is dense and difficult to decipher due to its stylized nature and the age of the document.



n b c d e f g h i k l r

Handwritten text in a cursive script, likely a historical form of Latin or a related language. The text is densely packed and spans most of the page. Some legible fragments include "Kontat", "19", "10", "11", "12", "13", "14", "15", "16", "17", "18", "19", "20", "21", "22", "23", "24", "25", "26", "27", "28", "29", "30", "31", "32", "33", "34", "35", "36", "37", "38", "39", "40", "41", "42", "43", "44", "45", "46", "47", "48", "49", "50", "51", "52", "53", "54", "55", "56", "57", "58", "59", "60", "61", "62", "63", "64", "65", "66", "67", "68", "69", "70", "71", "72", "73", "74", "75", "76", "77", "78", "79", "80", "81", "82", "83", "84", "85", "86", "87", "88", "89", "90", "91", "92", "93", "94", "95", "96", "97", "98", "99", "100".



h b c d e f g h i k l m n o p q r s t

u x y

Handwritten text in a cursive script, likely a cipher or shorthand, covering the majority of the page. The text is dense and difficult to decipher due to its stylized nature and the age of the document.



Faint, illegible text at the bottom of the page, possibly bleed-through from the reverse side or a separate layer of text.

The first part of the
 manuscript is written in
 a very old hand, and
 contains a list of names
 and places, which are
 now almost entirely
 forgotten.

The second part of the
 manuscript is written in
 a more modern hand, and
 contains a list of names
 and places, which are
 now almost entirely
 forgotten.

The third part of the
 manuscript is written in
 a very old hand, and
 contains a list of names
 and places, which are
 now almost entirely
 forgotten.

Handwritten text in a cursive script, likely a medieval or early modern manuscript. The text is arranged in several lines, though it is significantly faded and difficult to decipher. It appears to be a list or a series of entries.

Handwritten text in a cursive script, continuing from the previous section. The text is arranged in several lines, though it is significantly faded and difficult to decipher. It appears to be a list or a series of entries.

Handwritten text in a cursive script, continuing from the previous section. The text is arranged in several lines, though it is significantly faded and difficult to decipher. It appears to be a list or a series of entries.

Handwritten text in a cursive script, likely a medieval or early modern manuscript. The text is written in dark ink on aged, slightly stained paper. It appears to be a list or a series of entries, possibly related to a legal or administrative document. The script is dense and somewhat difficult to decipher due to its cursive nature and the age of the document.

Handwritten text in a cursive script, continuing the list or series of entries. The text is written in dark ink on aged, slightly stained paper. It appears to be a list or a series of entries, possibly related to a legal or administrative document. The script is dense and somewhat difficult to decipher due to its cursive nature and the age of the document.

Handwritten text in a cursive script, continuing the list or series of entries. The text is written in dark ink on aged, slightly stained paper. It appears to be a list or a series of entries, possibly related to a legal or administrative document. The script is dense and somewhat difficult to decipher due to its cursive nature and the age of the document.

Handwritten text in a cursive script, likely a medieval or early modern language, appearing as bleed-through from the reverse side of the page.

Handwritten text in a cursive script, likely a medieval or early modern language, appearing as bleed-through from the reverse side of the page.

Handwritten text in a cursive script, likely a medieval or early modern language, appearing as bleed-through from the reverse side of the page.

The first part of the book
 is a list of names and titles
 of the members of the
 court of the king of
 France in the year
 1300. The names are
 written in a very
 old hand, and are
 mostly of French
 origin. The list
 is divided into
 several columns, and
 the names are
 arranged in
 alphabetical order.
 The first column
 contains the names
 of the king and
 queen, and the
 names of the
 children of the
 king. The second
 column contains
 the names of the
 lords and knights
 of the king's
 court. The third
 column contains
 the names of the
 judges and
 officers of the
 court. The fourth
 column contains
 the names of the
 clerics and
 monks. The fifth
 column contains
 the names of the
 soldiers and
 knights of the
 king's army. The
 sixth column
 contains the names
 of the merchants
 and traders. The
 seventh column
 contains the names
 of the peasants
 and laborers. The
 eighth column
 contains the names
 of the artisans
 and craftsmen. The
 ninth column
 contains the names
 of the scholars
 and students. The
 tenth column
 contains the names
 of the poets and
 writers. The
 eleventh column
 contains the names
 of the musicians
 and dancers. The
 twelfth column
 contains the names
 of the actors and
 comedians. The
 thirteenth column
 contains the names
 of the jugglers
 and acrobats. The
 fourteenth column
 contains the names
 of the minstrels
 and troubadours.
 The fifteenth
 column contains
 the names of the
 minstrels and
 troubadours.
 The sixteenth
 column contains
 the names of the
 minstrels and
 troubadours.
 The seventeenth
 column contains
 the names of the
 minstrels and
 troubadours.
 The eighteenth
 column contains
 the names of the
 minstrels and
 troubadours.
 The nineteenth
 column contains
 the names of the
 minstrels and
 troubadours.
 The twentieth
 column contains
 the names of the
 minstrels and
 troubadours.

The second part of the book
 is a list of names and titles
 of the members of the
 court of the king of
 France in the year
 1300. The names are
 written in a very
 old hand, and are
 mostly of French
 origin. The list
 is divided into
 several columns, and
 the names are
 arranged in
 alphabetical order.
 The first column
 contains the names
 of the king and
 queen, and the
 names of the
 children of the
 king. The second
 column contains
 the names of the
 lords and knights
 of the king's
 court. The third
 column contains
 the names of the
 judges and
 officers of the
 court. The fourth
 column contains
 the names of the
 clerics and
 monks. The fifth
 column contains
 the names of the
 soldiers and
 knights of the
 king's army. The
 sixth column
 contains the names
 of the merchants
 and traders. The
 seventh column
 contains the names
 of the peasants
 and laborers. The
 eighth column
 contains the names
 of the artisans
 and craftsmen. The
 ninth column
 contains the names
 of the scholars
 and students. The
 tenth column
 contains the names
 of the poets and
 writers. The
 eleventh column
 contains the names
 of the musicians
 and dancers. The
 twelfth column
 contains the names
 of the actors and
 comedians. The
 thirteenth column
 contains the names
 of the jugglers
 and acrobats. The
 fourteenth column
 contains the names
 of the minstrels
 and troubadours.
 The fifteenth
 column contains
 the names of the
 minstrels and
 troubadours.
 The sixteenth
 column contains
 the names of the
 minstrels and
 troubadours.
 The seventeenth
 column contains
 the names of the
 minstrels and
 troubadours.
 The eighteenth
 column contains
 the names of the
 minstrels and
 troubadours.
 The nineteenth
 column contains
 the names of the
 minstrels and
 troubadours.
 The twentieth
 column contains
 the names of the
 minstrels and
 troubadours.

Handwritten text, likely bleed-through from the reverse side of the page. The script is dense and appears to be a medieval or early modern cursive.

Handwritten text, likely bleed-through from the reverse side of the page. The script is dense and appears to be a medieval or early modern cursive.

Handwritten text in a medieval or early modern cursive script, possibly a list or a series of entries. The text is dense and occupies the lower half of the page.

Handwritten text in an ancient script, likely Brahmi or similar, consisting of several lines of characters.

Second section of handwritten text, appearing as a distinct paragraph or entry.

Third section of handwritten text, continuing the script on the lower part of the page.

Handwritten text in Devanagari script, likely a header or title.

Main body of handwritten text in Devanagari script, consisting of several lines.

Second main body of handwritten text in Devanagari script, separated by a horizontal line.

Final section of handwritten text in Devanagari script at the bottom of the page.

யான பழங்காலத்திலே பழங்காலத்திலே : 9000
புதிதான பழங்காலத்திலே பழங்காலத்திலே

பழங்காலத்திலே பழங்காலத்திலே :
பழங்காலத்திலே பழங்காலத்திலே : 9000
பழங்காலத்திலே பழங்காலத்திலே : 9000
பழங்காலத்திலே பழங்காலத்திலே : 9000
பழங்காலத்திலே பழங்காலத்திலே : 9000

பழங்காலத்திலே பழங்காலத்திலே : 9000
பழங்காலத்திலே பழங்காலத்திலே : 9000
பழங்காலத்திலே பழங்காலத்திலே : 9000

பழங்காலத்திலே பழங்காலத்திலே : 9000
பழங்காலத்திலே பழங்காலத்திலே : 9000
பழங்காலத்திலே பழங்காலத்திலே : 9000
பழங்காலத்திலே பழங்காலத்திலே : 9000

Handwritten text in a script, likely Devanagari, appearing as bleed-through from the reverse side of the page. The text is arranged in approximately 15 horizontal lines, though it is significantly faded and difficult to decipher. Some characters are more prominent than others, but the overall content is illegible due to the bleed-through effect and the age of the document.

... ..
... ..
... ..

... ..
... ..
... ..
... ..
... ..

... ..
... ..
... ..

... ..
... ..
... ..
... ..
... ..

Handwritten text in an ancient script, likely Tamil, arranged in approximately 15 horizontal lines. The script is dense and appears to be a form of classical or religious text. The lines are roughly parallel to each other, following the curve of the page. The ink is dark, and the paper shows signs of age and wear.

சுருதிமுறை

111

Handwritten text in a script, possibly Tamil or Malayalam, consisting of several lines of text.

Handwritten title or section header in a script, possibly Tamil or Malayalam.

Handwritten text in a script, possibly Tamil or Malayalam, consisting of several lines of text.

Handwritten text in a script, possibly Tamil or Malayalam, consisting of several lines of text.

Handwritten text in a script, possibly Tamil or Malayalam, consisting of several lines of text.

Handwritten text in a script, possibly Tamil or Malayalam, consisting of several lines of text.

Handwritten text in an ancient script, likely Tamil, consisting of approximately 10 lines of text.

Handwritten title or section header in the same script, possibly starting with a large initial letter.

Main body of handwritten text in the script, containing several paragraphs of text with some larger initial letters.



Handwritten text in an ancient script, likely Tamil, consisting of approximately 10 lines. The script is dense and appears to be a form of classical or religious writing.

Handwritten text in an ancient script, likely Tamil, consisting of approximately 10 lines. The script is dense and appears to be a form of classical or religious writing.

Handwritten text in an ancient script, likely Tamil, consisting of approximately 10 lines. The script is dense and appears to be a form of classical or religious writing.

Handwritten text in an ancient script, likely a form of Brahmi or similar, consisting of several lines of text.

IIICAMTALART.

Large decorative initial letter followed by several lines of handwritten text in the same ancient script.

Handwritten text in a cursive script, likely a medieval or early modern manuscript. The text is written on aged, slightly stained paper and appears to be a list or a series of entries, possibly related to a calendar or a record book. The script is dense and difficult to decipher due to its cursive nature and the fading of the ink.

INCANTATIONES.

Handwritten text in a cursive script, likely a medieval or early modern manuscript. This section contains several lines of text, possibly incantations or magical formulas, as indicated by the heading. The text is written on aged, slightly stained paper and appears to be a list or a series of entries, possibly related to a calendar or a record book. The script is dense and difficult to decipher due to its cursive nature and the fading of the ink.

Faint, illegible text at the top of the page, possibly bleed-through from the reverse side.

ICAMWALIT

Main body of faint, illegible text, likely bleed-through from the reverse side of the page.

Handwritten text in an ancient script, likely a form of Brahmi or similar, consisting of several lines of characters.

Handwritten title or section header in the same ancient script, possibly indicating a specific chapter or topic.

Main body of handwritten text in the ancient script, including several lines of characters and some larger, possibly decorative or initial characters.

Handwritten text in an ancient script, likely Tamil, arranged in approximately 15 lines. The text is written in dark ink on aged, yellowish paper. The script is dense and appears to be a form of classical or religious literature. The lines are roughly parallel and fill most of the page's width. The paper shows signs of wear, including creases and some discoloration, particularly along the left edge where the book's binding is visible.

Handwritten text in an ancient script, likely Tamil, consisting of approximately 10 lines. The script is dense and appears to be a form of classical or religious text.

Handwritten text in an ancient script, likely Tamil, consisting of approximately 10 lines. The script is dense and appears to be a form of classical or religious text.

Handwritten text in an ancient script, likely Tamil, consisting of approximately 10 lines. The script is dense and appears to be a form of classical or religious text.

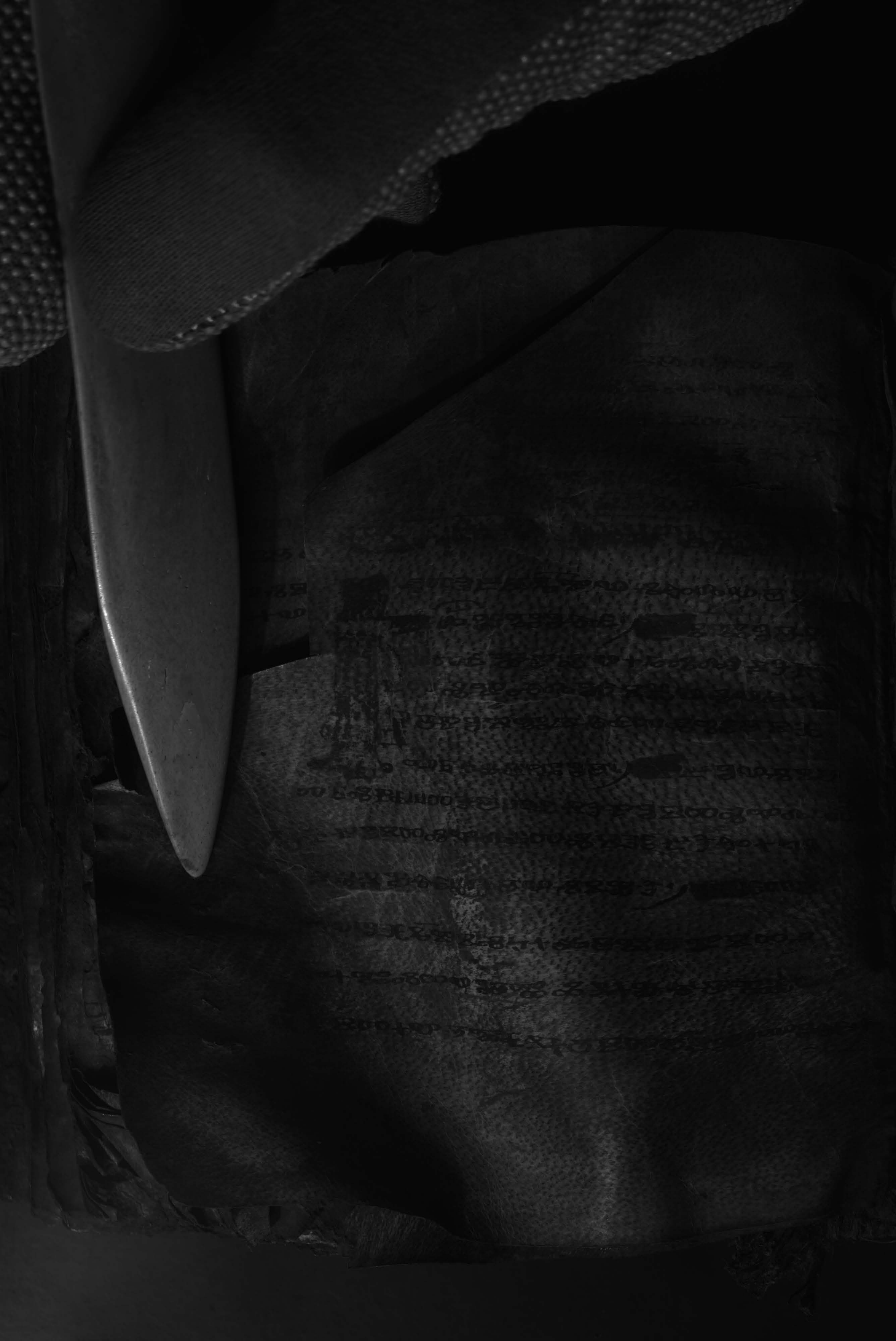
Handwritten text in a cursive script, likely a medieval manuscript. The text is arranged in several lines, with some words appearing to be in a different script or dialect. The ink is dark and the paper is aged and slightly stained.

INCANTATIONES.

Handwritten text in a cursive script, likely a medieval manuscript. The text is arranged in several lines, with some words appearing to be in a different script or dialect. The ink is dark and the paper is aged and slightly stained.

Handwritten text in an ancient script, likely Tamil, arranged in approximately 15 horizontal lines. The script is dark and appears to be ink on aged, textured paper. The lines are roughly parallel and contain dense characters. The text is somewhat faded and difficult to decipher due to the age and wear of the manuscript.

Handwritten text in an ancient script, likely Tamil, arranged in approximately 15 horizontal lines. The script is dark and appears to be ink on aged, textured paper. The lines are roughly parallel and contain dense characters. The text is somewhat faded and difficult to decipher due to the age and wear of the manuscript.



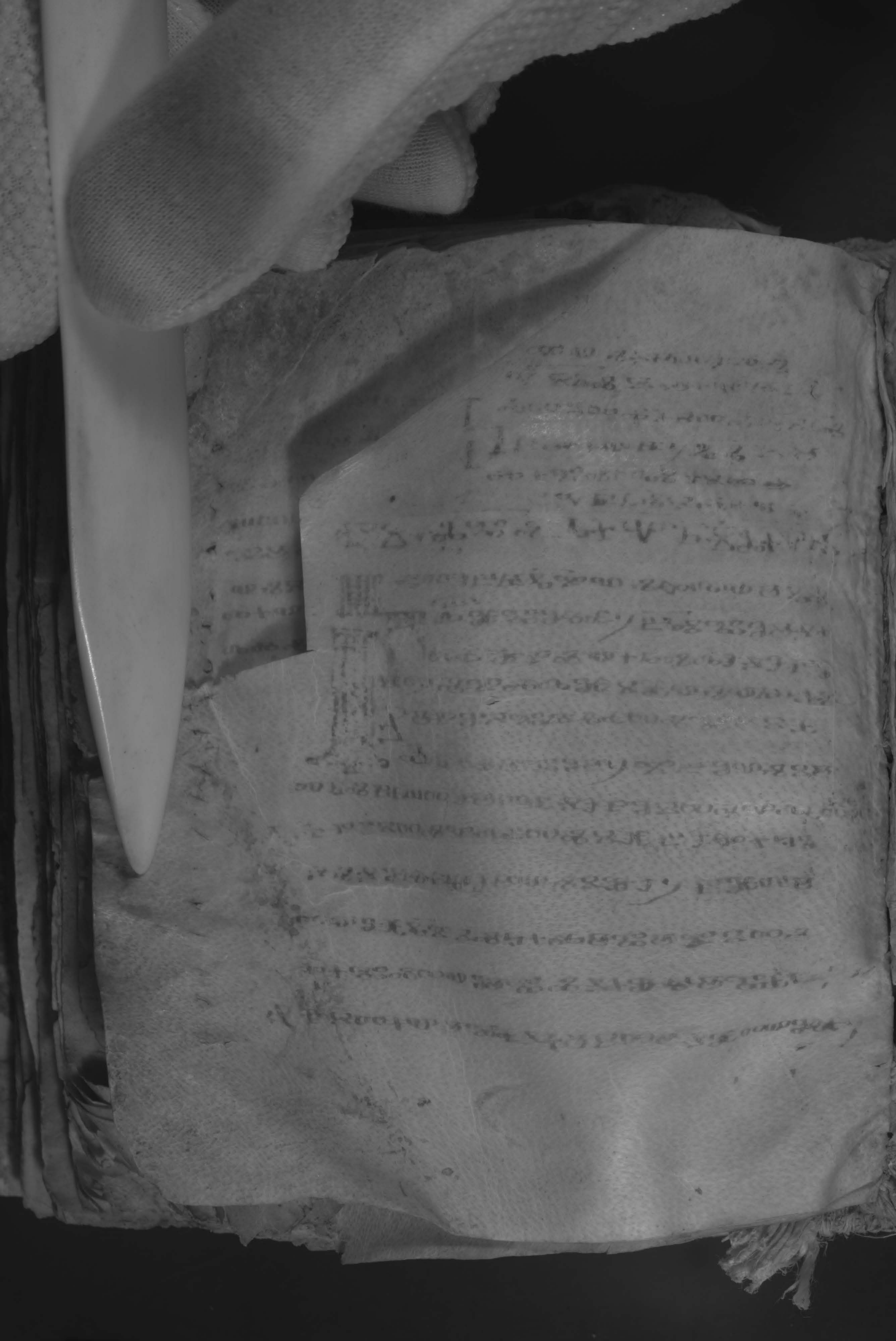
Handwritten text in Tamil script, likely a manuscript or record, written on aged paper. The text is arranged in approximately 15 horizontal lines across the page. The script is dense and characteristic of traditional Tamil writing. Some lines appear to be separated by horizontal lines, possibly indicating different sections or entries. The paper shows signs of age, including slight discoloration and wear at the edges.

Handwritten text in an ancient script, likely Tamil, on aged, yellowed paper. The text is arranged in approximately 15 horizontal lines. A prominent feature is a large, ornate initial letter 'T' (Tamil 'Ta') at the beginning of the fourth line, which is decorated with vertical lines and a crown-like top. The script is dense and appears to be a form of classical or religious literature. The paper shows signs of significant age, including creases, discoloration, and some loss of material at the top edge.

Handwritten text in an ancient script, likely Tamil, on aged and stained paper. The text is arranged in approximately 12 horizontal lines. The script is dense and characteristic of historical South Asian manuscripts. The paper shows signs of significant wear, including discoloration and some loss of material at the edges.



Handwritten text in an ancient script, possibly Tamil, on a piece of aged paper. The text is arranged in several lines, with some lines starting with large, decorative initial characters. The script is dense and appears to be a form of classical or religious writing. The paper is yellowed and shows signs of wear, including creases and some discoloration. The text is written in dark ink, and the overall appearance is that of an old manuscript or document.



Handwritten text in an ancient script, possibly Tamil or Grantha, arranged in approximately 15 horizontal lines. The script is finely inscribed on aged, yellowish paper. A prominent feature is a large, ornate initial letter at the beginning of the fourth line, which is decorated with vertical lines and a small crown-like element. The text appears to be a formal document or a religious manuscript, given the style and the use of such a decorative initial. The lines of text are closely spaced and cover most of the width of the page.

Handwritten text in an ancient script, possibly Tamil or Grantha, located on the upper portion of the manuscript page.

Main body of handwritten text in an ancient script, consisting of several lines of text separated by horizontal lines.

Handwritten text in an ancient script, likely Tamil, on a single leaf of aged paper. The text is arranged in approximately seven horizontal lines, starting with a large initial character on the left. The script is dark and somewhat faded, with some ink bleed-through from the reverse side of the leaf.

Handwritten text in an ancient script, likely Tamil, on a single leaf of aged paper. This line appears to be a continuation or a separate entry, starting with a large initial character.

Handwritten text in an ancient script, likely Tamil, on a single leaf of aged paper. The text is arranged in approximately two horizontal lines.

Handwritten text in an ancient script, likely Tamil, on a single leaf of aged paper. This line is shorter than the others, starting with a large initial character.

Handwritten text in an ancient script, likely Tamil, on a single leaf of aged paper. The text is arranged in approximately two horizontal lines.

Handwritten text in an ancient script, likely Tamil, on a single leaf of aged paper. The text is arranged in approximately two horizontal lines.

Handwritten text in an ancient script, likely Tamil, on a single leaf of aged paper. This line is shorter than the others, starting with a large initial character.

Handwritten text in an ancient script, likely Tamil, on a single leaf of aged paper. The text is arranged in approximately two horizontal lines.

Handwritten text in an ancient script, likely Tamil, on a single leaf of aged paper. The text is arranged in approximately two horizontal lines.

Handwritten text in an ancient script, likely Tamil, on a single leaf of aged paper. The text is arranged in approximately two horizontal lines.

Handwritten text in an ancient script, likely Tamil, on a single leaf of aged paper. The text is arranged in approximately two horizontal lines.

Handwritten text in an ancient script, likely Tamil, on a single leaf of aged paper. This line is shorter than the others, starting with a large initial character.

Handwritten text in an ancient script, likely Tamil, located in the upper section of the manuscript page. The text is arranged in several lines and appears to be a list or a set of instructions.

Handwritten text in an ancient script, likely Tamil, located in the middle section of the manuscript page. This section includes a prominent horizontal line that may separate different parts of the text.

Handwritten text in an ancient script, likely Tamil, located in the lower-middle section of the manuscript page. The text continues in several lines, maintaining the same script as the other sections.

Handwritten text in an ancient script, likely Tamil, located in the lower section of the manuscript page. This section also contains several lines of text, possibly concluding a list or a chapter.

Handwritten text in an ancient script, likely Tamil, located at the bottom of the manuscript page. This appears to be the final line of text on this page.

34

Handwritten text in an ancient script, likely Tamil, on the top page of the manuscript. The text is arranged in several lines and appears to be a continuation of a narrative or a list of items.

Handwritten text in an ancient script, likely Tamil, on the middle page of the manuscript. The text is arranged in several lines and appears to be a continuation of a narrative or a list of items.

34

Handwritten text in an ancient script, likely Tamil, on the lower middle page of the manuscript. The text is arranged in several lines and appears to be a continuation of a narrative or a list of items.

Handwritten text in an ancient script, likely Tamil, on the bottom page of the manuscript. The text is arranged in several lines and appears to be a continuation of a narrative or a list of items.

Handwritten text in an ancient script, likely Tamil, on the bottom page of the manuscript. The text is arranged in several lines and appears to be a continuation of a narrative or a list of items.

Handwritten text in an ancient script, likely Tamil, consisting of several lines of characters.

Handwritten text in an ancient script, likely Tamil, consisting of several lines of characters.

34

Handwritten text in an ancient script, likely Tamil, consisting of several lines of characters.

Handwritten text in an ancient script, likely Tamil, consisting of several lines of characters.

Handwritten text in an ancient script, likely Tamil, consisting of several lines of characters.

Handwritten text in an ancient script, likely Tamil, on a piece of aged paper. The text is arranged in several lines and is somewhat faded.

Handwritten text in an ancient script, likely Tamil, on a piece of aged paper. The text is arranged in several lines and is somewhat faded.

34

Handwritten text in an ancient script, likely Tamil, on a piece of aged paper. The text is arranged in several lines and is somewhat faded.

Handwritten text in an ancient script, likely Tamil, on a piece of aged paper. The text is arranged in several lines and is somewhat faded.

Handwritten text in an ancient script, likely Tamil, on a piece of aged paper. The text is arranged in several lines and is somewhat faded.

Handwritten text in an ancient script, likely Tamil, consisting of several lines of characters.

Handwritten text in an ancient script, likely Tamil, consisting of several lines of characters.

Handwritten text in an ancient script, likely Tamil, consisting of several lines of characters.

Handwritten text in an ancient script, likely Tamil, consisting of several lines of characters.

Handwritten text in an ancient script, likely Tamil, consisting of several lines of characters.

34



...
 ...
 ...
 ...
 ...
 ...
 ...
 ...
 ...
 ...

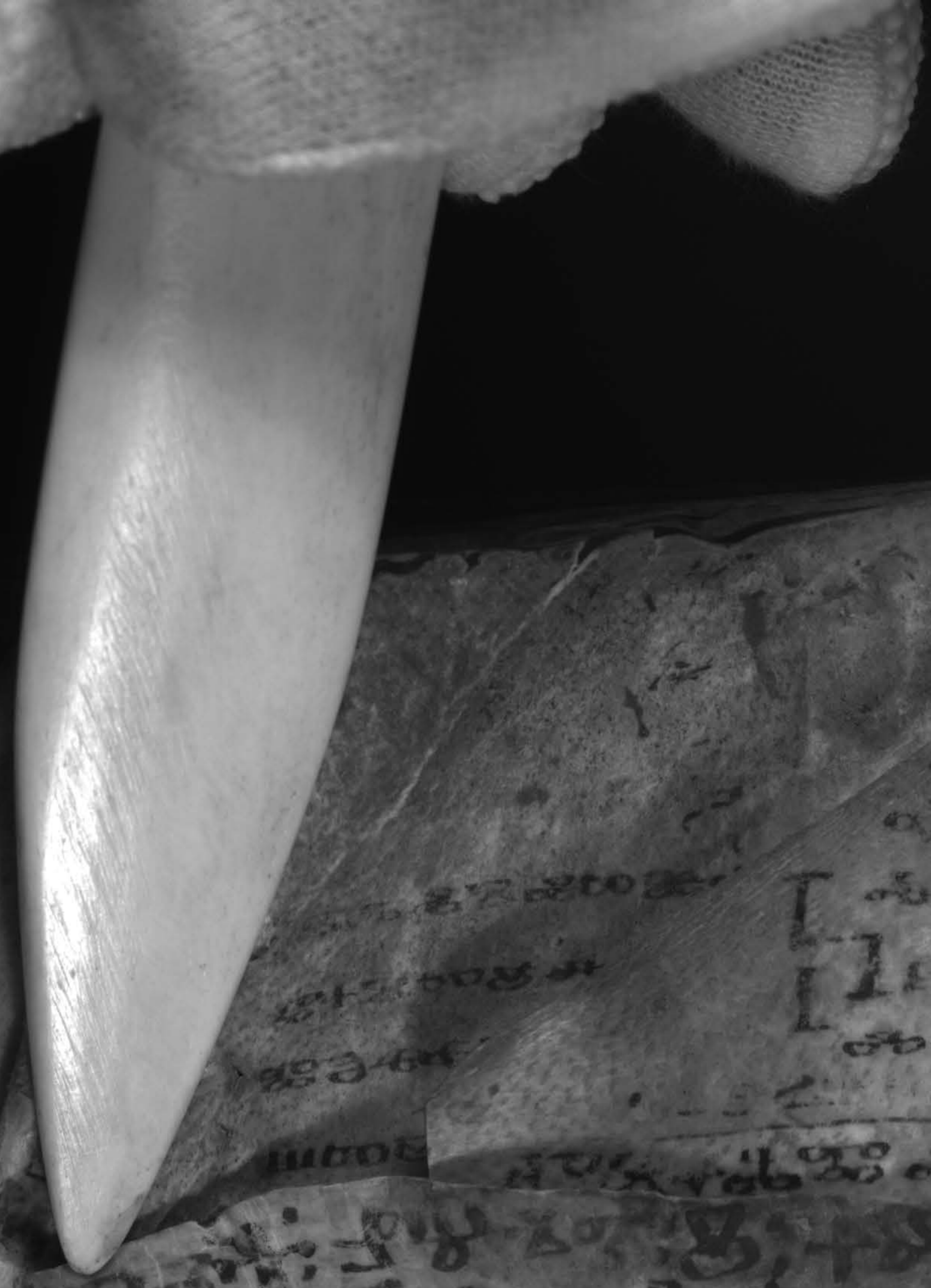
...
 ...
 ...
 ...
 ...





The manuscript page contains handwritten text in a script that appears to be a form of Tamil or a related South Asian script. The text is arranged in approximately 12 horizontal lines across the page. The characters are dark and somewhat faded, with some lines showing signs of being crossed out or corrected. The paper is aged and shows some staining and wear, particularly along the left edge where it is bound.





The manuscript page contains handwritten text in an ancient script, likely Tamil. The text is arranged in several horizontal lines across the upper portion of the page. The script is dark and appears to be ink on aged, slightly textured paper. The lines of text are somewhat irregular in length and spacing, suggesting a traditional or handwritten style. The overall appearance is that of an old, well-preserved document.



Handwritten text in a script, likely Tamil, on a piece of aged paper. The text is arranged in several lines, with some characters appearing to be in a different script or dialect. The paper is wrinkled and shows signs of age.

Handwritten text in a script, likely Tamil, on a larger piece of aged paper. The text is arranged in several lines, with some characters appearing to be in a different script or dialect. The paper is wrinkled and shows signs of age.





၁၀၀၀ နှစ်ကျော်အထိ
 ကျင့်စဉ်များကို ဖော်ပြပါ
 မြန်မာ့အလင်းစာတိုက်
 [] မြန်မာ့အလင်းစာတိုက်
 [] မြန်မာ့အလင်းစာတိုက်
 မြန်မာ့အလင်းစာတိုက်
 မြန်မာ့အလင်းစာတိုက်

မြန်မာ့အလင်းစာတိုက်
 မြန်မာ့အလင်းစာတိုက်
 မြန်မာ့အလင်းစာတိုက်
 မြန်မာ့အလင်းစာတိုက်
 မြန်မာ့အလင်းစာတိုက်

Handwritten text in an ancient script, likely Tamil, arranged in approximately 15 horizontal lines. The text is mirrored across the page, suggesting it was written on a folded sheet of paper. The script is dense and appears to be a form of classical or religious literature. The paper is aged and shows signs of wear, including creases and discoloration.

Handwritten text in a script, possibly Tamil or Malayalam, located at the top of the page. The text is partially obscured by shadows and appears to be a header or introductory section.

Second line of handwritten text, continuing the script. The characters are dense and difficult to decipher due to the low contrast and lighting.

Third line of handwritten text, showing a continuation of the script. The text is written in a cursive style typical of South Asian manuscripts.

Fourth line of handwritten text, with some characters appearing to be larger or more prominent than others, possibly indicating a sub-section or a specific point.

Fifth line of handwritten text, showing further progression of the script. The text is somewhat faded and less legible.

Sixth and final line of handwritten text visible on the page, appearing to be a concluding sentence or a signature.

Handwritten text in an ancient script, likely Tamil, located at the top of the page. The characters are densely packed and appear to be in a specific dialect or form of the script.

Second line of handwritten text, continuing the script from the top. The ink is dark and the paper shows signs of age and wear.

Third line of handwritten text, showing a continuation of the script. The characters are well-defined against the aged paper background.

Fourth line of handwritten text, featuring a distinct character that might be a section marker or a specific symbol within the script.

Fifth line of handwritten text, showing a continuation of the script. The text is slightly faded but remains legible.

Sixth line of handwritten text, continuing the flow of the script. The characters are consistent with the previous lines.

Seventh line of handwritten text, showing a continuation of the script. The text is well-preserved on this part of the page.

Eighth line of handwritten text, featuring a continuation of the script. The characters are clearly visible.

Ninth line of handwritten text, showing a continuation of the script. The text is slightly more faded than the previous lines.

Tenth line of handwritten text, continuing the script. The characters are well-defined.

Eleventh line of handwritten text, showing a continuation of the script. The text is slightly more faded.

Twelfth line of handwritten text, continuing the script. The characters are clearly visible.

Thirteenth line of handwritten text, featuring a continuation of the script. The text is well-preserved.

Fourteenth line of handwritten text, showing a continuation of the script. The text is slightly more faded.

Fifteenth line of handwritten text, continuing the script. The characters are clearly visible.

Sixteenth line of handwritten text, showing a continuation of the script. The text is well-preserved.

Seventeenth line of handwritten text, continuing the script. The characters are clearly visible.

Eighteenth line of handwritten text, showing a continuation of the script. The text is slightly more faded.

Nineteenth line of handwritten text, continuing the script. The characters are clearly visible.

Twentieth line of handwritten text, showing a continuation of the script. The text is well-preserved.

Twenty-first line of handwritten text, continuing the script. The characters are clearly visible.

Handwritten text in an ancient script, likely Tamil, arranged in approximately 15 horizontal lines. The text is written in dark ink on aged, slightly yellowed paper. The script is dense and appears to be a form of classical or religious literature. The lines are roughly parallel to each other, following the curve of the page. The ink shows some fading and bleed-through from the reverse side of the leaf. The overall appearance is that of a well-preserved but aged manuscript page.

Handwritten text in an ancient script, likely Tamil, arranged in approximately 15 horizontal lines. The text is written in dark ink on aged, slightly yellowed paper. The script is dense and appears to be a form of classical or religious literature. The lines are roughly parallel but show some irregularity due to the paper's texture and the handwriting. The text is oriented horizontally across the page, which is slightly curved. The right edge of the page shows the binding of the book, and the left edge shows the gutter where it meets the next page.

Handwritten text in a cursive script, likely a historical document or manuscript. The text is arranged in approximately 15 horizontal lines across the page. The script is dense and difficult to decipher due to its cursive nature and the age of the document. The lines are separated by faint horizontal lines, suggesting a structured layout. The paper shows signs of wear, including creases and discoloration.

Handwritten text in an ancient script, likely Tamil, arranged in approximately 15 horizontal lines. The script is dense and appears to be a form of classical or religious writing. The text is written on aged, slightly yellowed paper with some visible texture and minor stains. The lines are roughly parallel but show some irregularity in spacing, typical of handwritten manuscripts. The characters are small and closely packed, with some larger characters that may serve as section markers or initials. The overall appearance is that of a well-preserved but clearly antique document.

1. 3. 4. 5. 6. 7. 8. 9. 10. 11. 12. 13. 14. 15. 16. 17. 18. 19. 20. 21. 22. 23. 24. 25. 26. 27. 28. 29. 30. 31. 32. 33. 34. 35. 36. 37. 38. 39. 40. 41. 42. 43. 44. 45. 46. 47. 48. 49. 50. 51. 52. 53. 54. 55. 56. 57. 58. 59. 60. 61. 62. 63. 64. 65. 66. 67. 68. 69. 70. 71. 72. 73. 74. 75. 76. 77. 78. 79. 80. 81. 82. 83. 84. 85. 86. 87. 88. 89. 90. 91. 92. 93. 94. 95. 96. 97. 98. 99. 100.

... ..

... ..

... ..

... ..

... ..

... ..

... ..

... ..

... ..

... ..

... ..

... ..

... ..

... ..

... ..

... ..

... ..

... ..

... ..

... ..

... ..

... ..

... ..

... ..

... ..

... ..

... ..

... ..

... ..

... ..

... ..

... ..

... 3000 ... 3000 ... 3000 ... 3000 ... 3000 ...

... 3000 ... 3000 ... 3000 ... 3000 ... 3000 ...

... 3000 ... 3000 ... 3000 ... 3000 ... 3000 ...

... 3000 ... 3000 ... 3000 ... 3000 ... 3000 ...

... 3000 ... 3000 ... 3000 ... 3000 ... 3000 ...

... 3000 ... 3000 ... 3000 ... 3000 ... 3000 ...

... 3000 ... 3000 ... 3000 ... 3000 ... 3000 ...

... 3000 ... 3000 ... 3000 ... 3000 ... 3000 ...

... 3000 ... 3000 ... 3000 ... 3000 ... 3000 ...

... 3000 ... 3000 ... 3000 ... 3000 ... 3000 ...

... 3000 ... 3000 ... 3000 ... 3000 ... 3000 ...

... 3000 ... 3000 ... 3000 ... 3000 ... 3000 ...

... 3000 ... 3000 ... 3000 ... 3000 ... 3000 ...

... 3000 ... 3000 ... 3000 ... 3000 ... 3000 ...

... 3000 ... 3000 ... 3000 ... 3000 ... 3000 ...

... 3000 ... 3000 ... 3000 ... 3000 ... 3000 ...

1.
 2.
 3.
 4.
 5.
 6.
 7.
 8.
 9.
 10.
 11.
 12.
 13.
 14.
 15.
 16.
 17.
 18.
 19.
 20.
 21.
 22.
 23.
 24.
 25.
 26.
 27.
 28.
 29.
 30.
 31.
 32.
 33.
 34.
 35.
 36.
 37.
 38.
 39.
 40.
 41.
 42.
 43.

... ..

... ..

... ..

... ..

... ..

... ..

... ..

... ..

... ..

... ..

... ..

... ..

... ..

... ..

... ..

... ..

Handwritten text in an ancient script, likely Tamil, arranged in approximately 20 horizontal lines. The text is mirrored across the gutter of the book, appearing as bleed-through from the reverse side. The script is dense and difficult to decipher due to the image's low resolution and the book's age. The lines of text are roughly parallel to the horizontal axis of the page.

Handwritten text in an ancient script, likely Tamil, arranged in approximately 20 horizontal lines. The text is extremely faint and difficult to decipher due to the low contrast and image quality. The script appears to be a form of South Indian script, possibly from a historical document or manuscript. The lines of text are roughly parallel to each other, following the curvature of the page. The overall appearance is that of an aged, possibly leather-bound, manuscript page.

Handwritten text in an ancient script, likely Tamil, arranged in approximately 20 horizontal lines. The script is dense and appears to be a form of classical or religious literature. The text is written in dark ink on aged, slightly textured paper. Some lines begin with larger characters that may serve as section markers or initial letters. The overall appearance is that of a well-preserved but aged manuscript page.

Handwritten text in an ancient script, likely Tamil, arranged in approximately 20 horizontal lines. The script is dense and appears to be a form of classical or religious literature. The text is written on aged, slightly stained paper. Some lines begin with a vertical stroke, possibly indicating the start of a new section or a specific type of verse. The ink is dark, and the overall appearance is that of an old manuscript page.

Handwritten text in an ancient script, likely Tamil, arranged in approximately 20 horizontal lines. The script is dense and appears to be a form of classical or religious literature. The text is written on aged, slightly stained paper. Some lines begin with a vertical stroke, possibly indicating the start of a new section or a specific type of verse. The ink is dark, and the overall appearance is that of an old manuscript page.

Handwritten text in a cursive script, likely a historical document or manuscript. The text is arranged in approximately 20 horizontal lines across the page. The script is dense and difficult to decipher due to its cursive nature and the age of the document. The paper shows signs of wear, including creases and discoloration. A white object, possibly a pen nib or a piece of paper, is visible on the left edge of the page.

Handwritten text in a historical script, likely Hebrew, written on aged, stained parchment. The text is organized into approximately 20 horizontal lines. The script is dense and characteristic of the medieval period. The parchment shows signs of significant wear, including discoloration, staining, and some physical damage, particularly along the left edge where the binding is visible. A white object, possibly a pen nib or a piece of paper, is partially visible on the left side of the page. The overall appearance is that of an ancient manuscript page.

Handwritten text in an ancient script, likely Tamil, arranged in approximately 20 horizontal lines. The script is dense and appears to be a form of classical or religious literature. The text is written on aged, slightly stained paper. Some lines begin with a vertical stroke, possibly indicating the start of a new section or a specific type of verse. The ink is dark, and the overall appearance is that of an old manuscript page.

Handwritten text at the top of the page, possibly a title or header.

Handwritten text line.

Handwritten text line.

Handwritten text line.

Handwritten text line.

Handwritten text line.

Handwritten text line.

Handwritten text line.

Handwritten text line.

Handwritten text line.

Handwritten text line.

Handwritten text line.

Handwritten text line.

Handwritten text line.

Handwritten text line.

Handwritten text line.

Handwritten text line.

Handwritten text line.

Handwritten text line.

Handwritten text line.

Handwritten text line.

Handwritten text line.

Handwritten text line.

Handwritten text line.

Handwritten text line.

Handwritten text line.

Handwritten text line.



Handwritten text on the right side of the page.

Handwritten text on the right side of the page.

Handwritten text on the right side of the page.

Handwritten text on the right side of the page.

Handwritten text on the right side of the page.

Handwritten text on the right side of the page.

Handwritten text in a South Asian script, likely Devanagari, consisting of approximately 10 lines. The text is very faint and difficult to decipher due to the low contrast and image quality.



Handwritten text in a South Asian script, likely Devanagari, consisting of approximately 10 lines. The text is very faint and difficult to decipher due to the low contrast and image quality.

Handwritten text in an ancient script, possibly Tamil or Grantha, located at the top of the page. The text is arranged in several lines and appears to be a formal opening or a specific section header.

Handwritten text in an ancient script, continuing from the top section. It includes several lines of text, some of which are preceded by decorative symbols or characters.

Two lines of handwritten text in an ancient script, possibly serving as a separator or a specific instruction within the document.

Handwritten text in an ancient script, including a section that appears to be enclosed in a rectangular frame or box, possibly indicating a specific part of the text.

Handwritten text in an ancient script, continuing the main body of the document. The text is densely packed and covers several lines.

Handwritten text in an ancient script at the bottom of the page, possibly a concluding section or a signature block.

Handwritten text in an ancient script on the right-hand page of the manuscript. The text is partially obscured by the binding and the left page, but some characters and lines are visible.

Handwritten text at the top of the page, possibly a title or header.

Handwritten text line.

Handwritten text line.

Handwritten text line.

Handwritten text line.

Handwritten text line.

Handwritten text line.

Handwritten text line.

Handwritten text line.

Handwritten text line.

Handwritten text line.



Handwritten text lines to the right of the diagram.

Handwritten text line.

Handwritten text line.

Handwritten text line.

Handwritten text line.

Handwritten text line.

Handwritten text line.

Handwritten text line.

Handwritten text line.

Handwritten text line.

Handwritten text line.

Handwritten text line at the bottom of the page.

Handwritten text in a cursive script, likely a medieval manuscript. The text is arranged in several lines, with some lines starting with a large initial letter. The script is dense and difficult to decipher due to its cursive nature and the age of the document.

Handwritten text, possibly a section header or a specific entry, written in a cursive script. It appears to be a single line of text, possibly containing a name or a title.



Handwritten text in a cursive script, continuing from the previous section. The text is arranged in several lines, with some lines starting with a large initial letter. The script is dense and difficult to decipher due to its cursive nature and the age of the document.

11
The first part of the
document is a list of
names and titles of
the members of the
committee. The names
are arranged in two
columns. The first
column contains the
names of the members
of the committee, and
the second column
contains their titles.
The names are written
in a cursive hand,
and the titles are
written in a smaller
hand. The list of
names and titles is
followed by a
statement of the
committee's
purpose. This
statement is written
in a cursive hand,
and is followed by
a list of the
committee's
recommendations.
The recommendations
are written in a
cursive hand, and
are followed by a
list of the
committee's
conclusions. The
conclusions are
written in a cursive
hand, and are
followed by a
list of the
committee's
recommendations.
The recommendations
are written in a
cursive hand, and
are followed by a
list of the
committee's
conclusions. The
conclusions are
written in a cursive
hand, and are
followed by a
list of the
committee's
recommendations.

LEGAL
FALL

1862

The second part of the
document is a list of
the names and titles of
the members of the
committee. The names
are arranged in two
columns. The first
column contains the
names of the members
of the committee, and
the second column
contains their titles.
The names are written
in a cursive hand,
and the titles are
written in a smaller
hand. The list of
names and titles is
followed by a
statement of the
committee's
purpose. This
statement is written
in a cursive hand,
and is followed by
a list of the
committee's
recommendations.
The recommendations
are written in a
cursive hand, and
are followed by a
list of the
committee's
conclusions. The
conclusions are
written in a cursive
hand, and are
followed by a
list of the
committee's
recommendations.
The recommendations
are written in a
cursive hand, and
are followed by a
list of the
committee's
conclusions. The
conclusions are
written in a cursive
hand, and are
followed by a
list of the
committee's
recommendations.

Handwritten text at the top of the page, possibly a title or header.

Second line of handwritten text.

Third line of handwritten text.

Fourth line of handwritten text.

Fifth line of handwritten text.

Sixth line of handwritten text.

Seventh line of handwritten text.

Eighth line of handwritten text.

Ninth line of handwritten text.

Tenth line of handwritten text.

Eleventh line of handwritten text.



Text block to the right of the diagram.

Text block to the right of the diagram.

Text block to the right of the diagram.

Text block to the right of the diagram.

Text block to the right of the diagram.

Text block to the right of the diagram.

Text block to the right of the diagram.

Text block to the right of the diagram.

Text block to the right of the diagram.

Text block to the right of the diagram.

Text block to the right of the diagram.

Text block to the right of the diagram.

Text block to the right of the diagram.

Text block to the right of the diagram.

Text block to the right of the diagram.

Handwritten text on the left side of the page.

Handwritten text on the left side of the page.

Handwritten text on the left side of the page.

පස්වන පොතෙහි සිව්වැනි කොටස

කෙසේ වුවද මෙහි මාතෘකා සහ සාකච්ඡා

නිරූපණය කර ඇත.

මෙහි මාතෘකා සහ සාකච්ඡා

මෙහි මාතෘකා සහ සාකච්ඡා

මෙහි මාතෘකා සහ සාකච්ඡා

මෙහි මාතෘකා සහ සාකච්ඡා

මෙහි මාතෘකා සහ සාකච්ඡා

මෙහි මාතෘකා සහ සාකච්ඡා

මෙහි මාතෘකා සහ සාකච්ඡා

මෙහි මාතෘකා සහ සාකච්ඡා

මෙහි මාතෘකා සහ සාකච්ඡා

මෙහි මාතෘකා සහ සාකච්ඡා

මෙහි මාතෘකා සහ සාකච්ඡා

මෙහි මාතෘකා සහ සාකච්ඡා

මෙහි මාතෘකා සහ සාකච්ඡා

මෙහි මාතෘකා සහ සාකච්ඡා

මෙහි මාතෘකා සහ සාකච්ඡා

මෙහි මාතෘකා සහ සාකච්ඡා

මෙහි මාතෘකා සහ සාකච්ඡා

මෙහි මාතෘකා සහ සාකච්ඡා

මෙහි මාතෘකා සහ සාකච්ඡා

Handwritten text in a script on the left margin, partially obscured by the gutter of the book.

Main body of handwritten text in a script, arranged in approximately 15 horizontal lines across the page. The text is dense and appears to be a continuous passage.

53

Handwritten text in a non-Latin script, likely an ancient or medieval language. The text is arranged in approximately 15 horizontal lines across the page. The script is dense and somewhat difficult to decipher due to fading and the texture of the parchment. There are some larger characters or symbols interspersed within the lines, possibly serving as section markers or decorative elements. The overall appearance is that of an aged, possibly liturgical or historical document.

[Faint, mostly illegible text in a historical script, possibly Latin or Greek, arranged in approximately 20 horizontal lines. The text is significantly faded and obscured by the texture and shadows of the aged paper.]



Handwritten text in a cursive script, likely a medieval or early modern language, possibly Latin or a Romance language. The text is arranged in several lines across the upper portion of the page.

Another line of handwritten text, continuing the script from the previous section. It appears to be a separate line or a continuation of a paragraph.

Text block containing several lines of cursive handwriting. The ink is somewhat faded, but the structure of the lines is clear.

Text block with multiple lines of cursive script. The handwriting is consistent with the rest of the page.

Text block consisting of several lines of cursive text. The lines are closely spaced and follow the curve of the page.

Text block with multiple lines of cursive handwriting. This section appears to be a distinct part of the document's content.



Text block at the bottom of the page, containing several lines of cursive script. It may represent a concluding section or a signature.

Handwritten text in an ancient script, likely the beginning of a section.

Second line of handwritten text, continuing the narrative or list.

Third line of handwritten text, showing a continuation of the script.

Fourth line of handwritten text, with some characters appearing to be in a different script or dialect.

Fifth line of handwritten text, possibly a transition or a new entry.

Sixth line of handwritten text, showing a change in the style or content.

Seventh line of handwritten text, appearing to be a list or a set of instructions.



Partial view of the adjacent page, showing handwritten text in the same script.

Handwritten text in a medieval script, likely Gothic or similar, arranged in approximately 15 lines. The text is written in dark ink on aged, slightly stained parchment. The lines are roughly parallel but show some irregularity due to the paper's texture and the scribe's hand.

Handwritten text in a medieval script, likely Gothic or similar, arranged in approximately 2 lines. This section appears to be a distinct part of the document, possibly a heading or a specific entry.



Handwritten text in a cursive script, possibly from a medieval manuscript. The text is written on aged, slightly damaged paper and is arranged in approximately 15 horizontal lines. The ink is dark, and the script is dense and somewhat difficult to decipher due to its cursive nature and the condition of the document.



Handwritten text located below the decorative initial. The text continues in the same cursive script as the main body of the page, though it is partially obscured by the ink bleed-through from the reverse side and the general wear of the parchment.

Partial view of the adjacent page of the manuscript, showing the right-hand edge of the text block. The script is consistent with the page on the left, and the parchment appears similarly aged and worn.

Handwritten text in a medieval script, possibly Latin, arranged in approximately 15 lines. The text is partially obscured by a large, decorative initial 'Q' at the beginning of the lower section.



Handwritten text in a medieval script, possibly Latin, arranged in approximately 4 lines, continuing the text from the upper section.



The text on this page is written in a medieval Gothic script, oriented upside down relative to the page's binding. It consists of approximately 15 lines of dense, handwritten Latin text. The ink is dark, and the parchment shows signs of age and wear.



The text at the bottom of the page continues the medieval Gothic script, appearing as a short section or a separate line of text.

The adjacent page on the right is partially visible, showing the continuation of the medieval Gothic script. The text is dense and fills most of the page's width.



Faint, mostly illegible text in a historical script, possibly Latin or Gothic, arranged in several lines across the page.



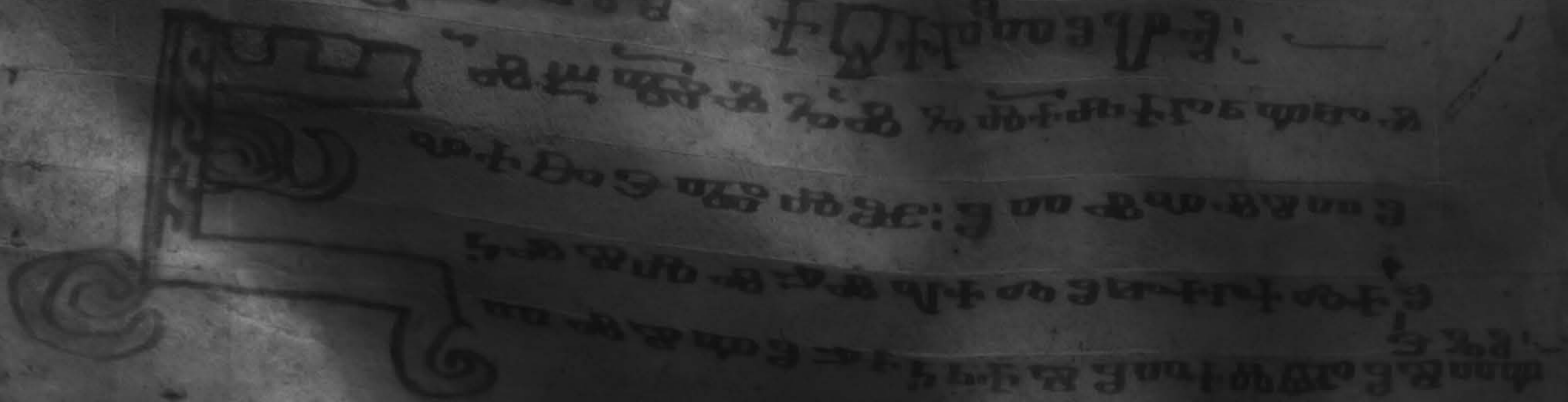
Faint text located within the decorative frame at the bottom of the page.

Handwritten text in a medieval script, likely Gothic or similar, arranged in approximately 15 lines. The text is written in dark ink on aged, slightly stained parchment. The lines are roughly parallel but show some irregularity due to the manuscript's condition.

Handwritten text in a medieval script, arranged in approximately 5 lines. This section is enclosed within a decorative border that features a large, ornate initial letter on the left side, possibly a 'Q' or 'R', with elaborate flourishes extending downwards and to the left.

Partial view of the adjacent page on the right, showing handwritten text in the same medieval script. The text is mostly cut off by the edge of the frame.

Handwritten text in a non-Latin script, possibly an early form of Malayalam or Tamil, arranged in approximately 25 horizontal lines. The text is densely packed and spans the width of the page.



Handwritten text in an ancient script, likely Tamil, covering the majority of the page. The text is arranged in approximately 20 horizontal lines, though some are obscured by shadows or damage. The script is dense and appears to be a form of classical or religious literature.

செய்யுள்
[Illegible text]



Handwritten text in an ancient script, likely Tamil, covering the majority of the page. The text is arranged in approximately 15 horizontal lines, showing signs of age and wear.

Handwritten text located at the bottom of the page, enclosed within a decorative, hand-drawn border. The text appears to be a separate section or a concluding note.

Handwritten text in an ancient script, likely Tamil, covering the majority of the page. The text is arranged in approximately 25 horizontal lines, showing signs of age and wear.



Vertical text on the left margin, possibly serving as a reference or index.

Vertical text on the right margin, partially visible from the adjacent page.

Handwritten text in a cursive script, likely a medieval manuscript. The text is arranged in several lines, with some words appearing to be in a different script or dialect. The ink is dark and the paper shows signs of age and wear.

Small handwritten notes or marginalia on the left side of the page, possibly indicating a page number or a reference.

Handwritten text in a cursive script, continuing from the previous section. The text is arranged in several lines, with some words appearing to be in a different script or dialect. The ink is dark and the paper shows signs of age and wear.

Handwritten text in a cursive script, continuing from the previous section. The text is arranged in several lines, with some words appearing to be in a different script or dialect. The ink is dark and the paper shows signs of age and wear.



Handwritten text in a historical script, likely a form of Malayalam or a related South Asian language. The text is arranged in approximately 20 horizontal lines across the page. The script is dense and appears to be a formal or legal document. There are some faint markings and what might be a signature or stamp in the lower right quadrant.



Handwritten text in a cursive script, likely a medieval manuscript. The text is arranged in approximately 15 horizontal lines across the page. The ink is dark and the paper shows signs of age and wear.

Handwritten text in a cursive script, likely a medieval manuscript. This section is enclosed within a decorative border that features ornate scrollwork and floral motifs at the corners and along the sides.

Handwritten text in an ancient script, likely Tamil, covering the majority of the page. The text is arranged in approximately 20 horizontal lines, starting from the top left and moving downwards. The script is dense and appears to be a form of classical or religious writing. There are some larger characters or symbols interspersed within the lines, possibly serving as section markers or decorative elements. The ink is dark, and the paper shows signs of age and wear.



Handwritten text in an ancient script, likely Tamil, arranged in approximately 20 horizontal lines. The text is highly faded and difficult to decipher, but appears to be a continuous passage of prose or poetry. The script is dense and fills most of the page's width.

Handwritten text in a South Indian script, likely Grantha or Tamil, arranged in approximately 25 horizontal lines. The text is densely packed and appears to be a continuous passage. The script is dark and somewhat faded, with some characters being difficult to discern. The lines are roughly parallel to each other, following the curve of the page. The overall appearance is that of an ancient manuscript page.

...
...
...
...
...
...
...
...

...
...
...
...
...
...
...
...

...
...
...
...
...
...
...
...

...
...
...
...
...
...
...
...

...
...
...
...
...

Handwritten text in an ancient script, likely Tamil, arranged in approximately 20 horizontal lines. The script is dense and appears to be a form of classical or religious literature. The text is written on aged, slightly yellowed paper with some visible wear and tear at the edges. The lines are roughly parallel but show some irregularity in spacing and alignment, typical of handwritten manuscripts. The characters are small and closely packed, with some larger characters that may serve as section markers or initial letters. The overall appearance is that of a well-preserved but clearly antique document.

Handwritten text in an ancient script, likely Tamil, arranged in approximately 25 horizontal lines. The text is densely packed and appears to be a form of religious or philosophical discourse. The script is highly stylized and difficult to decipher without specialized knowledge. The paper is aged and shows signs of wear, including creases and discoloration.

Handwritten text in an ancient script, likely Tamil, arranged in approximately 25 horizontal lines. The text is written in dark ink on aged, slightly yellowed paper. The script is dense and appears to be a form of classical or religious literature. The lines are roughly parallel but show some irregularity due to the paper's texture and the way the text was written. The overall appearance is that of a well-preserved but old manuscript page.

Handwritten text in a cursive script, likely a historical document or manuscript. The text is written on aged, slightly stained paper and is oriented vertically. The script is dense and difficult to decipher due to its cursive nature and the image's low resolution. The text appears to be organized into several paragraphs or sections, with some lines starting with capital letters or specific symbols. The overall appearance is that of an old, possibly Latin or Italian, manuscript page.

Handwritten text in an ancient script, likely Tamil, arranged in approximately 20 horizontal lines. The script is dense and appears to be a form of classical or religious literature. The text is written on aged, slightly yellowed paper with some visible wear and tear at the edges. The lines are roughly parallel but show some irregularity in spacing, typical of handwritten manuscripts. The characters are small and closely packed, with some larger characters that may serve as section markers or initials. The overall appearance is that of a well-preserved but clearly antique document.

Handwritten text in an ancient script, likely Tamil, arranged in approximately 20 horizontal lines. The script is dense and appears to be a form of classical or religious literature. The lines are somewhat irregular due to the paper's texture and the way the text was written. The characters are dark and stand out against the lighter, aged paper background.

Handwritten text in a script, likely Tamil or Sanskrit, arranged in approximately 20 horizontal lines. The text is extremely faint and difficult to decipher due to the low contrast and dark background of the image. It appears to be a list or a series of entries, possibly containing names, titles, or descriptions. Some characters are more distinct than others, but the overall content is illegible.

Handwritten text in an ancient script, likely Tamil, covering the majority of the page. The text is arranged in approximately 25 horizontal lines, showing signs of age and wear. Some lines include small decorative symbols or initials.

1. *Handwritten text in a script, likely Malayalam, starting with a large initial letter.*
 2. *Second line of text, continuing the script.*
 3. *Third line of text, with some spacing.*
 4. *Fourth line of text, showing a clear initial letter.*
 5. *Fifth line of text, appearing to be a separate entry or section.*
 6. *Sixth line of text, continuing the main body of writing.*
 7. *Seventh line of text, with some decorative or larger characters.*
 8. *Eighth line of text, showing a transition in the script.*
 9. *Ninth line of text, continuing the narrative or list.*
 10. *Tenth line of text, with some distinct characters.*
 11. *Eleventh line of text, showing a change in the writing style.*
 12. *Twelfth line of text, appearing to be a conclusion or end of a section.*
 13. *Thirteenth line of text, with some larger characters.*
 14. *Fourteenth line of text, continuing the script.*
 15. *Fifteenth line of text, showing a distinct initial.*
 16. *Sixteenth line of text, with some spacing.*
 17. *Seventeenth line of text, continuing the main body of writing.*
 18. *Eighteenth line of text, showing a transition in the script.*
 19. *Nineteenth line of text, appearing to be a separate entry or section.*
 20. *Twentieth line of text, continuing the narrative or list.*

[Faint, mirrored text visible through the paper, likely bleed-through from the reverse side. The text is illegible due to fading and bleed-through.]

743

The first part of the paper is devoted to a general
 consideration of the subject, and to a statement of the
 objects of the present inquiry. It is then divided into
 three parts, the first of which is devoted to a
 description of the various species of the genus
 and to a statement of their geographical distribution.
 The second part is devoted to a description of the
 habits and life history of the various species, and
 to a statement of their economic importance. The
 third part is devoted to a description of the
 various diseases to which the genus is subject, and
 to a statement of the means of their prevention and
 cure.

123

Faint, illegible text, possibly bleed-through from the reverse side of the page.

The text on this page is extremely faint and illegible. It appears to be a list or a series of entries, possibly in a historical or scientific context. The text is arranged in approximately 15 horizontal lines across the page.

Handwritten text in a cursive script, likely a medieval manuscript. The text is arranged in approximately 25 horizontal lines across the page. The script is dense and difficult to decipher due to fading and the angle of the page. Some words are partially legible, such as "Venerabilis" and "Magister".

143

Faint, illegible text, likely bleed-through from the reverse side of the page. The text is arranged in approximately 20 horizontal lines across the page.

143

Faint, illegible text, possibly bleed-through from the reverse side of the page.

143

143

Faint, illegible text, likely bleed-through from the reverse side of the page. The text is arranged in approximately 20 horizontal lines across the page.

Handwritten text in a medieval script, possibly Gothic or similar, covering the majority of the page. The text is arranged in approximately 20 horizontal lines, with some lines appearing to be part of a list or numbered entries. The script is dense and difficult to decipher due to the image's low resolution and lighting.

Handwritten text visible on the adjacent page to the right, showing the continuation of the medieval script. The text is partially obscured by the binding of the book.

Handwritten text in a script, likely Tamil, covering the main body of the page. The text is arranged in approximately 15 horizontal lines, with some lines starting with a vertical line on the left side, possibly indicating a new section or a list. The script is dense and appears to be a form of classical or historical writing.

Handwritten text in a script, likely Tamil, located on the right edge of the page. This text is partially cut off and appears to be a continuation from the adjacent page or a marginal note.

Handwritten text in a cursive script, likely a medieval manuscript. The text is arranged in approximately 15 horizontal lines across the page. The script is dense and difficult to decipher due to its cursive nature and the dark, aged appearance of the parchment. The text appears to be a continuous passage, possibly a letter or a section of a larger work. There are some faint markings and a small heart-shaped symbol near the top center of the page.

Handwritten text in a medieval script, likely Gothic or similar, arranged in approximately 20 horizontal lines. The text is written in dark ink on aged, slightly textured parchment. The script is dense and uniform in style. The first line begins with a large, decorative initial letter, possibly a 'C' or 'D', which is slightly larger than the rest of the text. The lines of text are closely spaced and fill most of the page's width. There are some faint, illegible markings and a small hole or tear in the parchment near the top center. The overall appearance is that of a well-preserved but aged manuscript page.

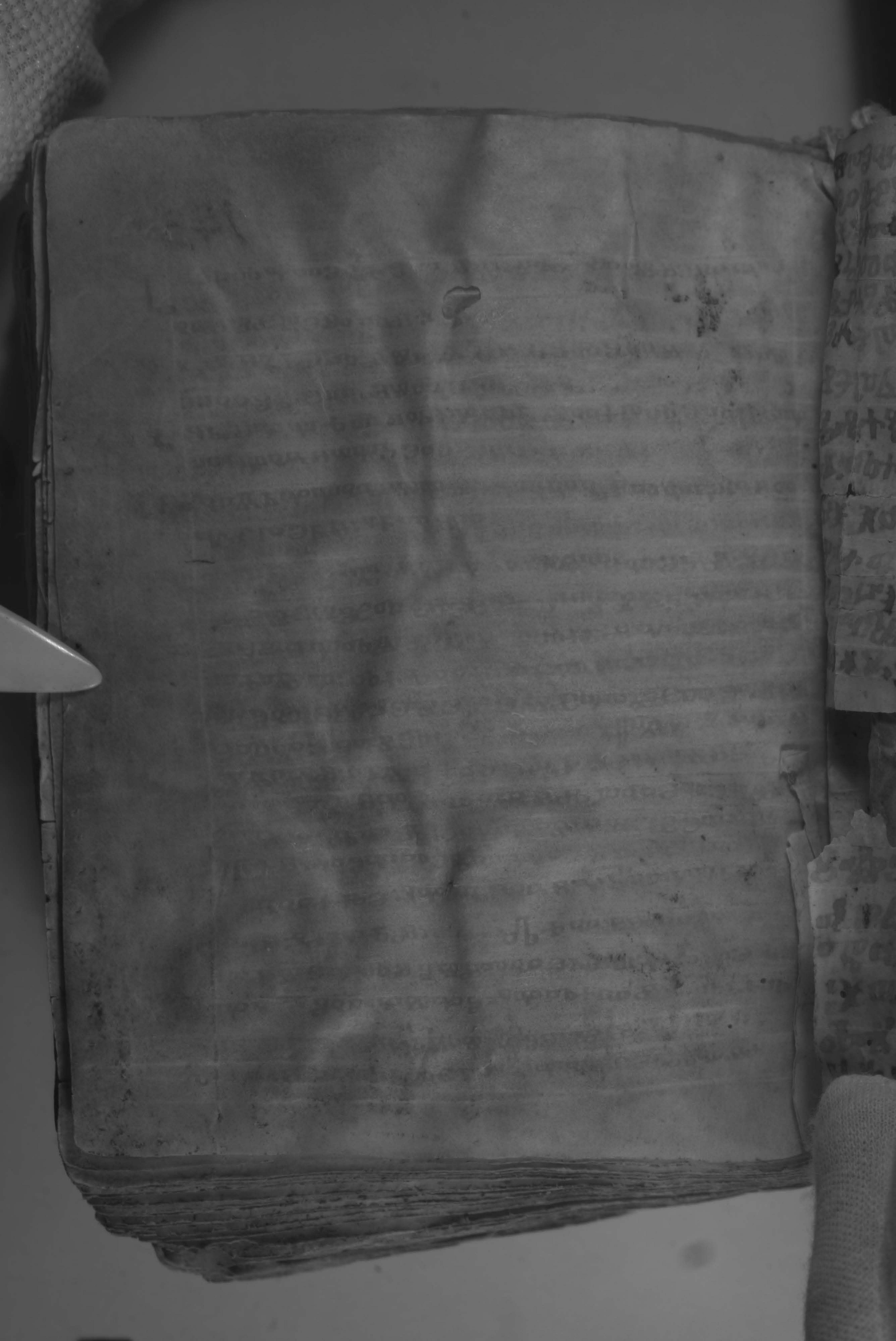
Handwritten text in a medieval script, likely Gothic or similar, arranged in approximately 20 horizontal lines. The text is mirrored across the page, suggesting it is bleed-through from the reverse side. The script is dense and difficult to decipher due to its age and the quality of the image. A small, dark mark or hole is visible near the top center of the page.

Fragment of handwritten text from the adjacent page, visible on the right edge of the image. It shows the continuation of the medieval script.



[Faint, mirrored text, likely bleed-through from the reverse side of the page. The text is illegible due to fading and low contrast.]

[Faint, mirrored text visible on the right edge of the page, likely bleed-through from the reverse side.]



Handwritten text in a medieval script, likely Gothic or similar, arranged in approximately 20 horizontal lines. The text is mirrored across the page, suggesting it is bleed-through from the reverse side. The script is dense and difficult to decipher due to the image's low resolution and the document's age. A small, dark mark or hole is visible near the top center of the page.

Fragment of handwritten text from the adjacent page, visible on the right edge of the image. It shows the continuation of the medieval script.



Handwritten text in an ancient script, likely Tamil, covering the upper portion of the page. The text is densely packed and appears to be a continuous passage.

A rectangular section of the page that has been torn out, showing the reverse side of the paper with handwritten text. The text is also in an ancient script, possibly Tamil, and is oriented upside down relative to the main page.

Handwritten text in an ancient script, likely Tamil, located on the right side of the page, adjacent to the torn-out section. The text continues the narrative or content of the page.

Handwritten text in a script, possibly Indic, on a piece of paper. The text is arranged in approximately 12 horizontal lines. The script is dense and appears to be a form of Devanagari or a related Indic script. The paper is aged and shows some wear and tear, particularly at the bottom edge. The text is difficult to decipher due to the low contrast and the cursive nature of the handwriting.

Handwritten text in an ancient script, likely Tamil, covering the upper portion of the page. The text is densely packed and appears to be a continuous passage.

Handwritten text in an ancient script, likely Tamil, covering the lower portion of the page. This section is separated from the upper text by a horizontal crease or fold in the paper.

Handwritten text in an ancient script, likely Tamil, located on the right side of the page. It appears to be a separate column of text, possibly a commentary or a continuation of the main text.

144
Handwritten text in a cursive script, likely a medieval manuscript. The text is arranged in approximately 15 horizontal lines across the page. The script is dense and difficult to decipher due to its cursive nature and the age of the document.

Fragment of handwritten text, possibly a continuation or a separate section. It consists of about 8 lines of cursive script, appearing as a distinct block within the larger page.

Fragment of handwritten text on the right side of the page, continuing the script from the main body of text. It consists of about 10 lines of cursive script.

Handwritten text in a cursive script, likely a historical document or manuscript, covering the upper portion of the page.

Fragment of handwritten text, possibly a continuation or a separate entry, located in the lower-left section of the page.

Fragment of handwritten text, possibly a continuation or a separate entry, located in the lower-right section of the page.

Faint, illegible text, possibly bleed-through from the reverse side of the page.

Faint, illegible text, possibly bleed-through from the reverse side of the page.

Fragment of text from the adjacent page, showing several lines of handwritten script.

Main body of handwritten text on page 145, consisting of approximately 15 lines of script.

Handwritten text in a dark script, likely a medieval manuscript, covering the upper half of the page.

Handwritten text in a dark script, continuing the manuscript content on the lower half of the page.

Fragment of handwritten text from the adjacent page, visible on the left edge.

Fragment of text from the adjacent page, showing several lines of handwritten script.

Main body of text on page 145, consisting of approximately 15 lines of dense, handwritten script.

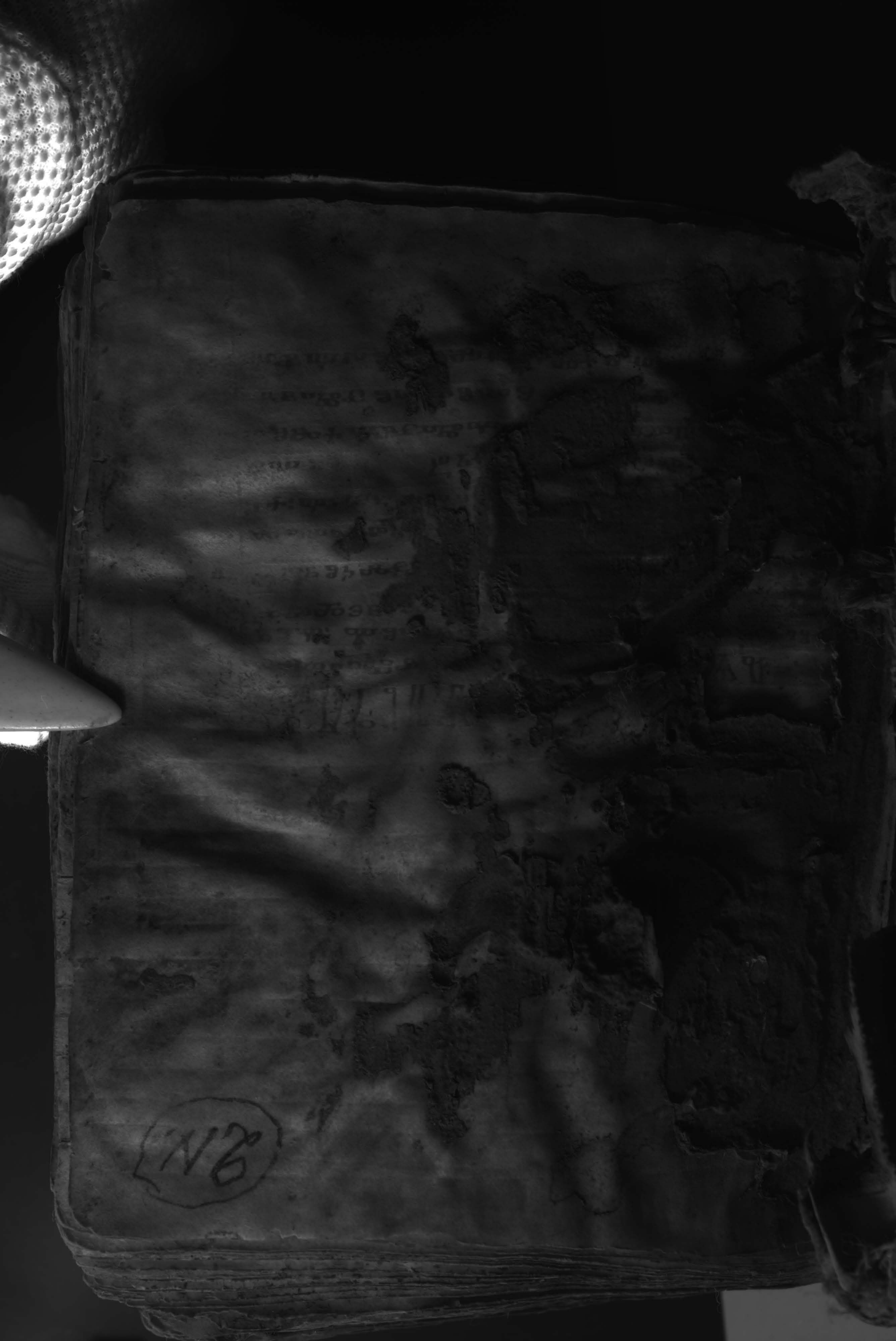
Faint, illegible text visible on the left edge of the page, likely bleed-through from the reverse side.

Main body of faint, illegible text on the page, appearing as ghosting or bleed-through from the reverse side.

145

Fragment of text from the adjacent page, showing several lines of handwritten script.

Main body of handwritten text on page 145, consisting of approximately 15 lines of script.





Handwritten text in an ancient script, possibly Tamil or Grantha, arranged in approximately 10 horizontal lines. The text is significantly obscured by large, dark, irregular stains and areas of discoloration, particularly on the right side of the page. Some characters are faintly visible through the damage.

9-N
6

Faint, mostly illegible text in an old script, possibly Hebrew or Aramaic, arranged in several lines across the upper portion of the page. The text is significantly obscured by dark, irregular stains and areas of discoloration.

9N. 6

Handwritten text in an ancient script, possibly Pahlavi or Avestan, is visible through the paper. The text is arranged in several lines and is significantly obscured by large, dark, irregular stains that cover the right and central portions of the page. Some characters are still legible, particularly in the lower half of the page.

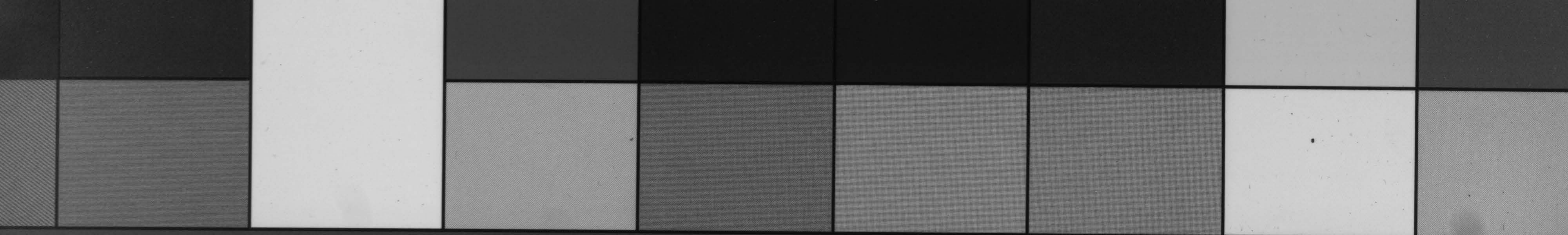
9N. 6

9N.

9N.

Faint, mostly illegible text in an ancient script, possibly Hebrew or Aramaic, arranged in several horizontal lines across the upper half of the page. The text is significantly obscured by large, dark, irregular stains and areas of discoloration.

9N.



Blue

Cyan

Green

Yellow

Red

Magenta

White

3/Color

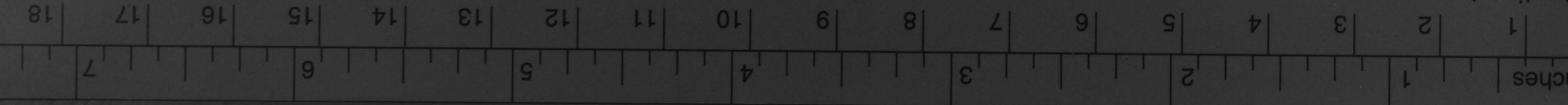
KODAK Color Control Patches

© The Tiffen Company, 2000

Kod
LICENSED PR

centimetres

ches



A

1

2

3

4

5

6

M

8

9

10

11

12

13

14

15

B

17

KODAK Gray Scale

© The Tiffen Company, 2000



Kod
LICENSED

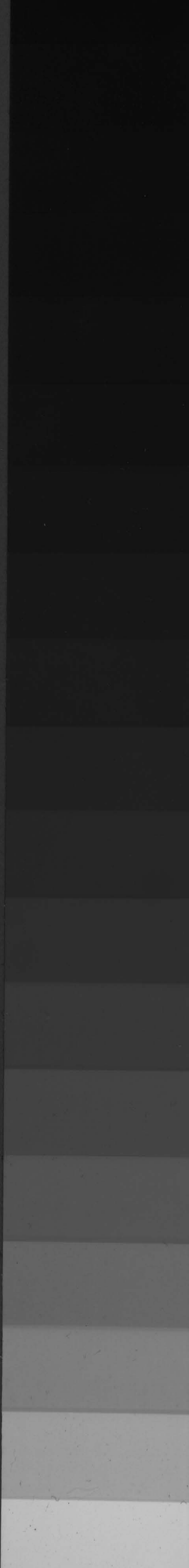
© The Tiffen Company, 2000

KODAK Gray Scale



Kodak
LICENSED PR

A 1 2 3 4 5 6 **M** 8 9 10 11 12 13 14 15 **B** 17 18



Inches 1 2 3 4 5 6 7
Centimetres 1 2 3 4 5 6 7 8 9 10 11 12 13 14 15 16 17 18

KODAK Color Control Patches

© The Tiffen Company, 2000

Kodak
LICENSED PR

3/Color

White

Magenta

Red

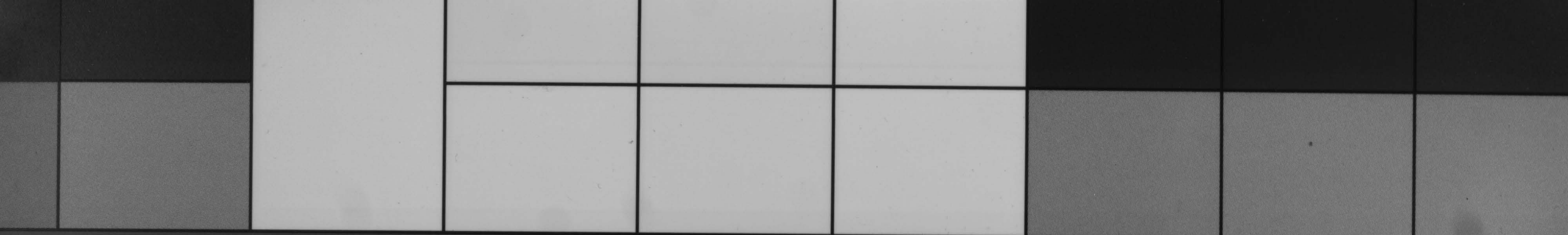
Yellow

Green

Cyan

Blue





Blue

Cyan

Green

Yellow

Red

Magenta

White

3/Color

KODAK Color Control Patches

© The Tiffen Company, 2000

Kod
LICENSED PR

Centimetres

1 2

3

4

5

6

7

8

9

10

11

12

13

14

15

16

17

18

Inches

1

2

3

4

5

6

7

8

9

10

11

12

13

14

15

16

17



A

1

2

3

4

5

6

M

8

9

10

11

12

13

14

15

B

17

18

KODAK Gray Scale

© The Tiffen Company, 2000



Kod
LICENSED



Blue

Cyan

Green

Yellow

Red

Magenta

White

3/Color

LICENSED PR

Kod

© The Tiffen Company, 2000

KODAK Color Control Patches

Centimetres

1 2

3

4

5

6

7

8

9

10

11

12

13

14

15

16

17

18

Inches

1

2

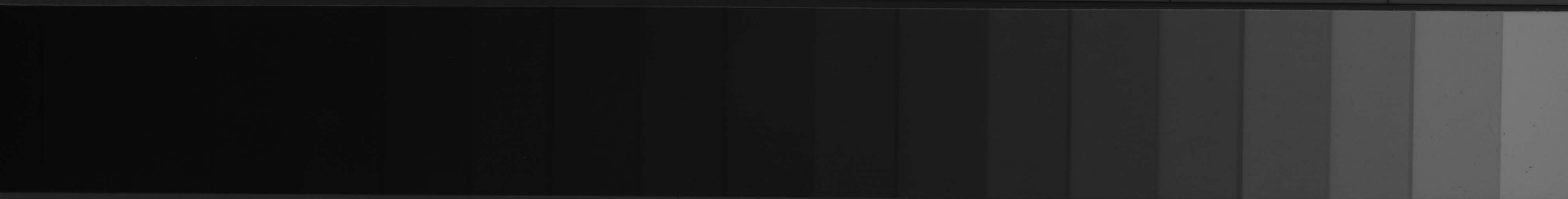
3

4

5

6

7



A

1

2

3

4

5

6

M

8

9

10

11

12

13

14

15

B

17

1

© The Tiffen Company, 2000

KODAK Gray Scale



LICENSED

Kod



Blue

Cyan

Green

Yellow

Red

Magenta

White

3/Color

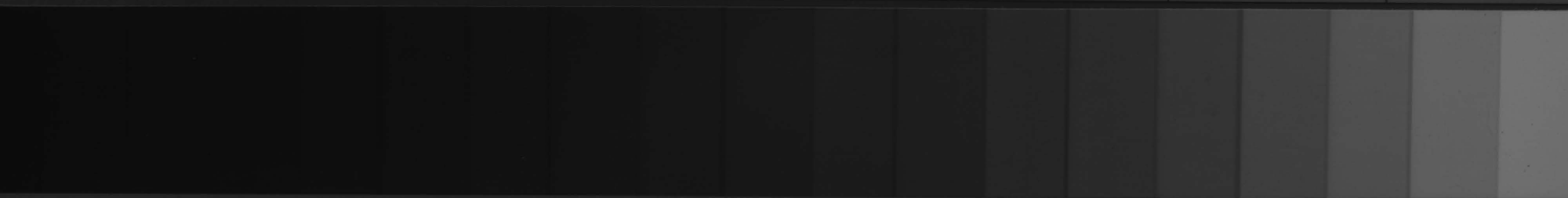
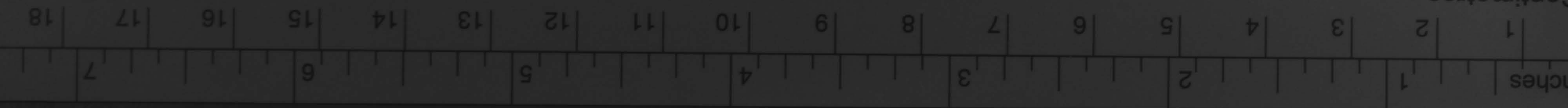
KODAK Color Control Patches

© The Tiffen Company, 2000

Kod
LICENSED PR

Centimetres

Inches



A

1

2

3

4

5

6

M

8

9

10

11

12

13

14

15

B

17

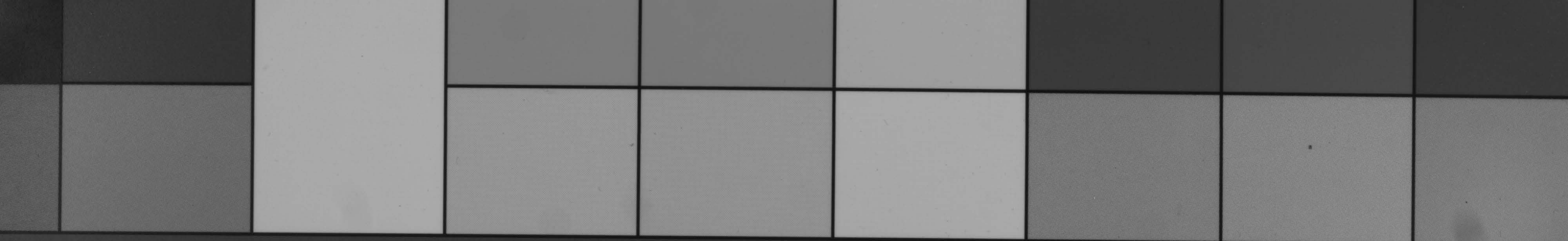
1

KODAK Gray Scale

© The Tiffen Company, 2000



Ko
LICENSED



Blue

Cyan

Green

Yellow

Red

Magenta

White

3/Color

KODAK Color Control Patches

© The Tiffen Company, 2000

Kod

LICENSED PR

Centimetres

Inches



A

1

2

3

4

5

6

M

8

9

10

11

12

13

14

15

B

17

18

KODAK Gray Scale

© The Tiffen Company, 2000



LICENSED

Kod